

Characterizing elemental, equivalent black, and refractory black carbon aerosol particles: a review of techniques, their limitations and uncertainties

Daniel A. Lack · Hans Moosmüller · Gavin R. McMeeking ·
Rajan K. Chakrabarty · Darrel Baumgardner

Received: 2 August 2013 / Revised: 18 September 2013 / Accepted: 25 September 2013 / Published online: 3 December 2013
© The Author(s) 2013. This article is published with open access at Springerlink.com

Abstract Elemental-, equivalent black- and refractory black-carbon are terms that have been defined in order to dissect the more general term, black carbon, into its component parts related to its specific chemical and optical properties and its impact on climate and health. Recent publications have attempted to clarify the meaning of these terms with respect to their environmental impact, particularly on climate. Here, we focus on the measurement aspects, reviewing the most commonly implemented techniques for the direct and indirect derivation of black carbon properties, their strengths, limitations, and uncertainties, and provide a non-exhaustive bibliography where the reader can find more detailed information. This review paper is designed as a guide for those wishing to learn about the current state of black carbon measurement instrumentation, how calibration is carried out, when one instrument may have the advantage over another, and where new techniques are needed to fill important knowledge gaps.

Keywords Aerosols · Particulates · Chemical sensors · Optical sensors · Thermal methods

Published in the special paper collection *Analytical Chemistry Related to Climate Change and Environmental Sustainability* with guest editors Richard J. C. Brown and Carlos A. Gonzalez.

D. A. Lack
NOAA Earth System Research Laboratory, 325 Broadway,
Boulder, CO 80305-3337, USA

H. Moosmüller · R. K. Chakrabarty
Desert Research Institute, Reno, NV, USA

G. R. McMeeking · D. Baumgardner (✉)
Droplet Measurement Technologies, 2545 Central Avenue,
Boulder, CO 80301, USA
e-mail: darrel.baumgardner@gmail.com

D. A. Lack
Cooperative Institute for Research in Environmental Sciences,
University of Colorado, Boulder, CO 80309, USA

Introduction

The title of this manuscript specifically avoids the use of the simplified term “black carbon (BC)” in order to emphasize that BC has been used for years as a catch-all term to describe a variety of types of carbonaceous particles. These types of particles are an important and ubiquitous component of the atmosphere that impact climate because of their direct interaction with solar radiation. Some fraction of them indirectly modify climate through their activation as cloud droplets or ice crystals whose size make them more effective dispersers of radiation than when they are aerosol particles [1, 2]. Their emissions from sources of combustion, man-made or through natural events, can modify the weather inadvertently by increasing the number of small water droplets while decreasing the production of rain or snow, an event that is still largely not understood yet generally accepted as an important factor in changing precipitation patterns [3, 4].

Only very recently, within the last 10 years, have researchers started identifying which types of aerosol particles have the largest impact on health. The general correlation between particle mass and mortality/morbidity has been well documented but more recent studies have established a causal link between carbonaceous particles and cardiovascular, respiratory, and neurological problems, although a great deal more research is needed to understand which properties of the particles are responsible for inciting physical disorders [5].

The need to quantify and document the properties of carbonaceous particles has led to the development and proliferation of a number of different instruments that measure these properties using a variety of techniques. Some of the older of these have been extensively evaluated, whereas the newer ones are still being studied to better understand their limitations and the uncertainties associated with their measurements. There are also numerous technical articles that describe the operating principles of these instruments as well as a number of studies comparing one technique against another.

Given the increasing number of investigators in a broad range of scientific disciplines who are interested in the measurement of carbonaceous particle properties to support their research in climate change, air quality, glaciology, health, and in other topics where these type of particles have significant impact, it seemed timely to write a succinct review of the most commonly used instruments that measure these particle properties. This presentation is meant to be a guide to those who are new to this field of research and wish to learn the basic operating principles of the instruments, their uncertainties and limitations, and to find literature references where more detail may be unearthed.

Definitions

Carbonaceous particles have many different properties but we will focus here only on the properties of those particles that are produced from combustion of fossil fuels and biomass and their physical, optical, and chemical properties. Because of the confusion over the years concerning terminology, we will start with definitions that have recently been clarified by Petzold et al. [6] with respect to the types of carbonaceous particles.

Black carbon (BC)

Following Petzold et al [6], we use BC when describing the material identified through the characteristic aggregate morphology of combustion sourced particles. Very little qualitative information on mass is achieved using morphology, and so the general qualitative term BC has been maintained for morphologic methods. This term has historically been used to describe those refractory carbonaceous particles that strongly absorb light at all solar wavelengths as reflected in a recent EPA report to congress [7] stating “In this report, BC is defined as the carbonaceous component of particulate matter that absorbs all wavelengths of solar radiation;” where all wavelengths of solar radiation corresponds to “the solar wavelengths present in the troposphere (eg, 280–2500 nm).” Bond et al. [8] provide a refined definition as “*a distinct type of carbonaceous material that is formed primarily in flames, is directly emitted to the atmosphere, and has a unique combination of physical properties.*” Bond et al. [8] and Petzold et al. [6] describe four fundamental physical properties of BC:

1. Strong visible wavelength-independent light absorption with a mass absorption coefficient (MAC) of at least $5 \text{ m}^2 \text{ g}^{-1}$ at 550 nm
2. Refractory with vaporization temperature near 4000 K
3. Graphitic SP^2 -bonded carbon with aggregate morphology
4. Insolubility in water and common organic solvents

Petzold et al. [6] recommend that ‘BC’ should be used only as a qualitative and descriptive term when referring to light-absorbing carbonaceous particles and should be avoided when describing measurements with evolved gas methods. Given that

the term BC has been so widely used by the modeling and assessment communities, its use will be unavoidable but some mitigation is possible as long as additional description is given as to how it is measured.

Elemental carbon (EC)

This is the component of carbonaceous particles that is thermally stable in an inert atmosphere up to approximately 4000 K. It can only be oxidized at temperatures $>340 \text{ }^\circ\text{C}$ [9]. EC can be derived from evolved gas analyzer (EGA) measurements, aerosol mass spectroscopy, and Raman spectroscopy measurements [6].

Equivalent black carbon (eBC)

A number of commercial instruments that measure the absorption coefficient of absorbing particles derive a mass concentration of “BC” using a conversion constant referred to as a mass absorption coefficient (MAC). In order to clarify that what is being measured may not be 100 % BC, Petzold et al. [6] recommend the use of eBC when reporting the carbon mass derived from the absorption coefficient.

Refractory black carbon (rBC)

The carbon mass derived from laser induced incandescence (LII) is referred to as refractory black carbon since it is derived by measuring the thermal emission of the carbon component of the particle that absorbs the laser energy.

Light absorbing carbon (LAC)

The carbon component of atmospheric aerosol that strongly absorbs light at visible wavelengths [10, 11], including eBC and brown carbon.

Organic carbon (OC)

This is the component of carbonaceous particles where the carbon molecules are chemically combined with hydrogen and other elements like oxygen, sulfur, etc. [12]. OC can be derived from several different methods and is also an operational definition for EGA measurements.

Total carbon (TC)

This is the sum of OC and EC derived from EGA measurements.

Brown carbon (BrC)

The light-absorbing OC in airborne aerosols of various origins, which tends to appear brown rather than black [10, 13,

14]. Their color is a result of non-uniform absorption over the visible wavelength range.

Measurement techniques

Throughout the remainder of this review, the focus will be on the measurement of EC, LAC (as a pathway to eBC), eBC and rBC. The general structure of the presentations for each measurement technique is (1) a brief description of the measurement principle, (2) discussion of how the principle is applied in practice, (3) cautionary notes on the limitations and uncertainties associated with the technique and interpretation of the measurements, and (4) a list references for further reading (these are combined in the reference section at the end of the paper).

Elemental carbon (EC)

Thermal and thermal optical analysis Thermal analysis techniques, commonly referred to as evolved gas analysis (EGA), require the deposit of the sample of interest on a filter or aluminum substrate. This is placed in an oven where it is heated over a period of time, in different stages, where each stage represents a different temperature. The property of EC that is being used as a measure of its concentration is its high oxidation temperature, >470 °C, compared with the lower temperatures that will volatilize OC and inorganics. Depending on the particular technique that is implemented, the heating is done in an oxidizing or an inert atmosphere where the number of stages and the temperature at each stage also depends on the protocol that is selected. The word “protocol” is used here in the context of what different monitoring programs have selected as optimum setting for analysis of filters taken at the stations within their network. In the US, the two most commonly used protocols are the National Institute for Occupational Safety and Health (NIOSH) Method 5040 [15, 16] and the Interagency Monitoring for Protected Visual Environments (IMPROVE) method [17, 18], respectively. Other countries’ monitoring programs have implemented similar protocols.

The implementation of the thermal analysis is shown in Fig. 1. It illustrates the basic steps for achieving a separation between OC and EC. Steps 1 through N-1 are designed to remove the carbon molecules associated with the OC by heating the sample in a non-oxidizing atmosphere so that the OC is volatilized and converted to carbon dioxide (CO_2) as it passes over a manganese dioxide (MnO_2) catalyst and is then measured, either with a CO_2 analyzer or converted to methane and quantified with a flame ionization detector (FID). The last step substitutes an oxidizing gas for the inert gas so that the remaining carbon combusts. Although this measurement can be made in just two steps, N is usually greater than two because OC will volatilize at varying temperatures, depending upon its source and composition; hence, providing additional

information about the evolved OC at different temperatures. The laser shown in the Fig. 1, and the associated detectors, are used to make corrections to the measurements attributable to problems inherent in the techniques that are described below.

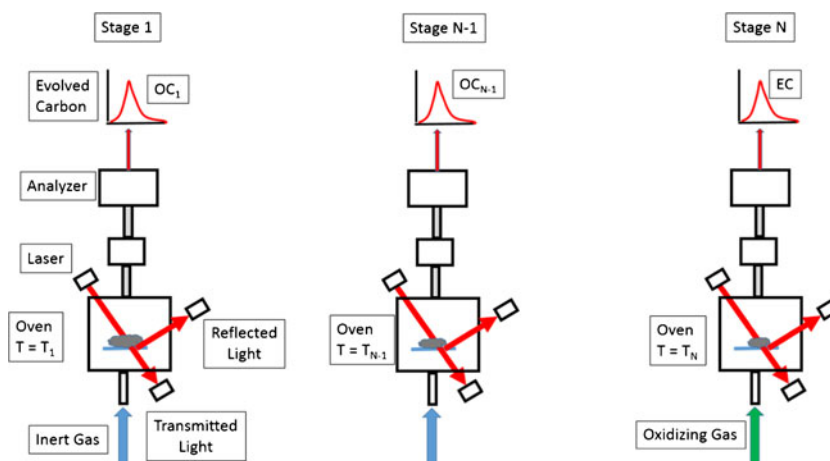
The advantage of this technique is that the measurement principle and its implementation are straightforward; however, there are a number of limitations associated with its implementation that complicate the interpretation of the results and introduce uncertainties that cannot be completely minimized. An excellent discussion of these limitations and uncertainties can be found in Watson et al. [19].

The separation of EC from OC would be simplified if there were a distinct temperature below which no EC would combust and above which no OC would volatilize. This is not the case since the process of heating the OC can cause some fraction of it to char by pyrolysis. This pyrolyzed carbon will no longer volatilize and, instead, combusts during the final temperature stage, incorrectly being measured as EC. In an attempt to determine how much of the OC pyrolyzes, the sample on the filter is illuminated with a laser and the amount of light transmitted or reflected is measured. The EC on the filter will absorb some of the incident light and as the char is formed it will also absorb light so that the measured transmission or reflectance will be seen to decrease. During the final stage of heating, the pyrolyzed OC and EC will begin to combust, removing the light-absorbing carbon so that the transmission or reflectance is seen to once again increase. When the measured transmitted or reflected light returns to its initial value, it is assumed that all carbon combusted after this point is only EC. The two techniques using transmitted or reflected light are referred to as thermal optical transmittance (TOT) [16, 20] or thermal optical reflectance (TOR) [18, 21], respectively. The analytical limit of detection for these two techniques is about $0.2 \mu\text{g cm}^{-2}$ [17, 20].

There are various interferences that introduce uncertainties into the determination of the exact temperature at which only EC is being measured. Some EC can be evolved during the inert gas stage as a result of the presence of various metal oxides (eg, Fe_2O_3) that will oxidize the EC [22]. In addition, complicating the interpretation of the TOT or TOR is that not all pyrolyzed OC will absorb at the wavelength of the laser [23]. There are additional problems related to the location of the temperature sensor in the oven with respect to the sample since the amount of time the oven is kept at a constant temperature is dependent upon how quickly the sample reaches the set temperature.

The calibration of this method can only be done to determine the response of the analyzer to a known quantity of an OC like sucrose that is put onto a filter, weighed, and then analyzed in the instrument. There is no generally accepted method for calibrating the response of the thermal method to EC since the community has yet to agree on a standard reference material (SRM) [24]. The general features of the thermal analysis measurement technique are listed in Table 1.

Fig. 1 This diagram illustrates that the derivation of organic and elemental carbon using thermal optical analysis requires multiple stages of heating at different set temperatures and with different carrier gases



For further reading: (1) experiments that have compared the different thermal methods: [23, 25–30]; (2) interferences from inorganic material: [31–33]; (3) sources of other limitations and uncertainties: [25, 28, 34–36].

Raman spectroscopy Raman spectroscopy (RS) measures the inelastic scattering of light when the vibrational mode of a chemical bond shifts the wavelength of some of the incident light. RS is very selective towards the hexagonal lattice structure of SP²-hybridized carbon, although a range of vibrational modes around a peak energy is observed, RS provides sensitive information on the structural order of atoms within systems that can show crystalline (ordered) or amorphous (disordered) properties and is very selective towards the hexagonal lattice structure of SP²-hybridized carbon [37]. When a long-range order of these hexagonal lattices exists, the material is referred to as graphite. The solid carbon produced from combustion of fossil- and bio-fuels results in short range (or disordered) hexagonal lattices [37]. Carbon–carbon (C–C) bonds within an intact hexagonal lattice produce characteristic RS modes at 1585 cm⁻¹ (referred to as the ‘G’, or graphitic, mode), whereas C–C bonds at the edges of crystals (incomplete hexagonal

lattice) produce RS modes at 1620 cm⁻¹ and 1360 cm⁻¹ [38–40] (‘D’, or disordered, modes). Because SP²-hybridized carbon contains only C–C bonds, these modes are highly selective to the occurrence of just EC.

Subtle differences in the RS modes can provide detailed information on the size and morphology of graphite crystals, and therefore, some contend, can provide source attribution, as morphology can change with combustion conditions [37, 41]. The modes, however, can also change because of other materials within the sample matrix. This is potentially an issue for combustion-sourced EC where common co-emitted species (such as organic matter) contain varying ratios of SP²- and SP³-hybridized carbon continuum [37, 39, 41]. Commercially available graphitic and organic materials are available to provide reference RS spectra [39, 42], some which show similarities to those of atmospheric EC [42].

The G mode intensity scales with crystal size [39], light absorptivity [43], and mass of EC [42, 44] in the bulk sample and so there is potential to use RS to quantify the absorptive properties and mass concentrations of EC. Rosen et al. [43] presented a semi-quantitative relationship of RS signals and light absorption. They integrated the area of the RS modes around 1600 cm⁻¹ and compared this to the light transmission through a filter, which can be corrected to produce a measure of absorption. Keller and Heintzenberg [44] used the ratio of intensities of the modes 1601 cm⁻¹ and 888 cm⁻¹ to linearly correlate RS response to graphitic carbon mass. Mertes et al. [42] integrated the area of the RS modes around from 1510 cm⁻¹ to 1736 cm⁻¹ to quantify the mass of atmospheric EC on a filter. To achieve this, they calibrated the RS responses to known masses of a commercially available calibration material that displayed similar RS properties to atmospheric EC (see Figs. 2 and 3). Uncertainties of up to 13 % in RS derived EC mass were reported [42]. If the calibration material does not match the spectral features of atmospheric EC, reported uncertainties will be larger. Ivleva et al. [41] and others have reported that organic components can show RS modes at around 1500 cm⁻³, which may interfere with the

Table 1 Thermal optical analysis technique summary

Measures	EC
Units	Mass
Collection media	Filter substrate
Collection time	Hours
Uncertainty	±20 %-50 %
Calibration	Currently no generally accepted method to calibrate EC. It can be calibrated to model compounds but there is no generally accepted method for calibration to atmospheric EC.
Biases	Pyrolysis, inorganics
Measures BrC	No

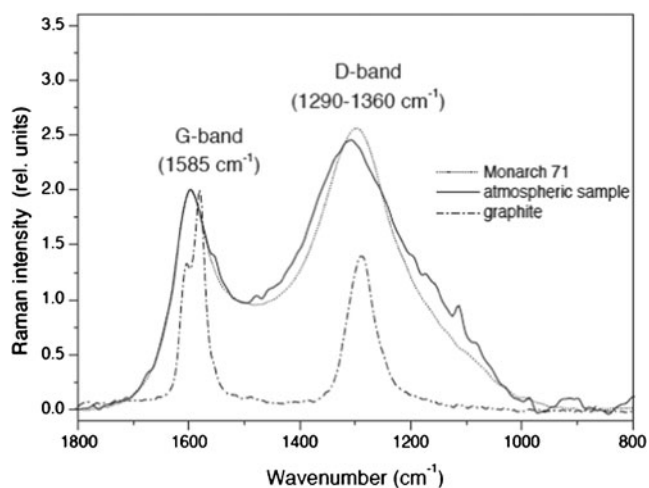


Fig. 2 Figure 1 from Mertes et al. [42]. Raman spectra of graphite (dashed dotted line), Monarch 71 (dotted line), and GC contained in atmospheric aerosol particles (solid line)

wavenumber integration range used for the quantification of EC by Mertes et al. [42]. Organic material can produce high background fluorescence in RS, which can influence curve-fitting routines and limit the quantitative ability of the approach [41]. Ivleva et al. [41] did show a robust negative correlation between the relative content of EC to total carbon and the FWHM of the D band at 1350 cm^{-1} with organics appearing as an outlier to this relationship, potentially providing a semi-quantitative measure of the influence of organic material to the RS analysis of EC mass.

Overall, the RS technique, although providing very specific identification of EC in a sample, has had limited application to

the quantification of EC. One major drawback of the technique is that the analysis of RS spectra usually requires curve fitting to multiple convolved spectral features. To achieve robust fitting high signal-to-noise is required; therefore, a sufficient quantity of sample must be collected [37, 39]. To achieve this for atmospheric samples, tens of minutes to multiple hours [42] of sampling are required making RS an impractical technique for real time atmospheric sampling requiring high time resolution. As mentioned, interference by fluorescence of some materials limits the ability to provide accurate curve fitting and so care must be taken that sample collection is not done using a fluorescing filter medium [39]. Sufficiently high laser power can also damage samples, although signal to noise can be improved with higher laser powers. Care should be taken to balance these trade-offs [39]. The general features of the Raman spectroscopy measurement technique are listed in Table 2.

Insolubility At room temperature, EC is an inert substance, insoluble in polar and nonpolar solvents including acids, bases, and organic solvents. While this property is often cited as a defining characteristic of EC [6, 46], very little work has been done to develop this characteristic into a measurement method. For the analysis of OC, solvent extraction with polar and non-polar solvents is often used to extract fractions of OC from filter samples [47–49]. Apple et al. [50] have obtained an upper limit estimate of the EC fraction in atmospheric aerosol sampled on glass fiber filters from the carbon remaining insoluble after a two-step extraction process. While we are not aware of any attempt to further develop this estimation into a quantitative measure of EC concentrations, insolubility has potential for separating EC from OC if a suitable protocol with appropriate solvents can be formulated and tested. The general features of the Insolubility measurement technique are listed in Table 3.

S. Mertes et al. / *Aerosol Science* 35 (2004) 347–361

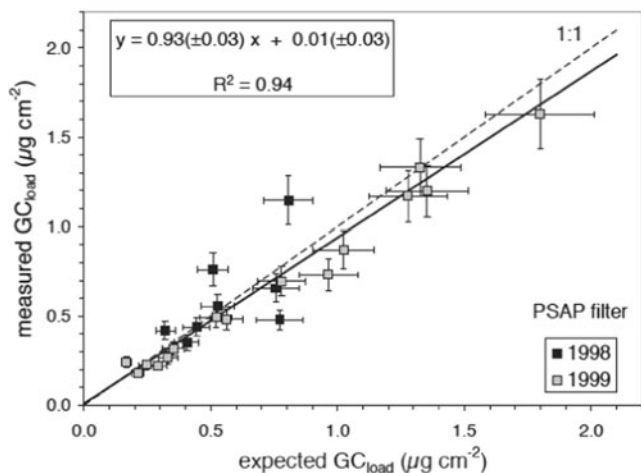


Fig. 3 Figure 4 from Mertes et al. [42] comparing GC mass loadings on the PSAP glass fiber filters and simultaneously operated polycarbonate filters from ambient sampling. The expected GC_{load} values (x-axis) are calculated from the GC mass loadings measured on the polycarbonate filters. Regression results (straight line) and the 1:1 line (dashed line) are indicated

Equivalent black carbon via measurement of light absorbing carbon (LAC)

Light absorption by particles has been used extensively to derive a mass of eBC requiring the conversion of the light absorption

Table 2 Raman spectroscopy technique summary

Measures	EC by calibration
Units	Mass
Collection media	Filter substrate
Collection time	Hours
Uncertainty	$\geq 13\%$
Calibration	Commercially available material can provide calibration for RS spectra and derived EC mass
Biases	Possibly co-emitted organics
Measures BrC	No

Table 3 Insolubility technique summary

Measures	EC solvent extraction
Units	Mass
Collection media	Filter substrate
Collection time	Hours
Uncertainty	Unknown
Calibration	Untested
Biases	Unknown
Measures BrC	No

coefficient to mass, via a mass absorption coefficient (MAC). The MAC of atmospheric air masses containing BC can vary with source and can be highly variable. Bond and Bergstrom [11] provide an extensive review of the literature and concluded that the MAC of freshly emitted BC from fossil fuel combustion is $7.5 \pm 1.2 \text{ m}^2\text{g}^{-1}$ (550 nm), whereas MACs for a variety of BC-containing air masses can range upwards of $15 \text{ m}^2\text{g}^{-1}$.

In recent years, it has been recognized that there are multiple contributors to atmospheric particle light absorption that may alter or bias the MAC of atmospheric BC [10, 11, 49]. BC and mineral dust were thought to be the main particle absorbers until recent research into the intrinsic absorptive properties of organic carbon showed that absorption can occur at some specific short, visible wavelengths (called brown carbon, BrC) [10]. Additionally, the enhanced BC absorption by coatings on the BC (internal mixing) has been demonstrated theoretically [51, 52], in the laboratory [53–55], and field settings [56–58]. Given this, it must be recognized that any assumption that an absorption method is measuring exclusively BC must be questioned. When the contribution of these non-BC absorbers is unknown, and a BC MAC is applied, the non-BC absorption is converted to a BC equivalent, thus the source of the term “equivalent BC,” described here and by Petzold et al. [6]. This treatment could bias the derived *eBC* mass high compared with the methods outlined in other sections, particularly for commercial instruments that use a single MAC to convert light absorption to *eBC* mass. There is evidence that for measurement of fresh combustion particles that this bias is within the uncertainties of the measurement methods [8, 58]. For instruments that measure light absorption but derive a BC mass by applying a single MAC to all air masses, care must be taken to determine whether the manufacturer applied MAC is appropriate.

These biases may be reduced by determining individual contributions to total absorption. Contamination from dust can usually be determined by a combination of air mass trajectory modeling, particle size measurement or absorption wavelength dependence [53, 59, 60]. Contributions of BrC and internal mixing have been determined using a variety of methods [61–63], however, the multi-wavelength extrapolation methods that have often been applied contain significant uncertainties

that should be considered before quantitative attribution is reported [62]. An alternative to measuring these contributions is to minimize them by sample pretreatment such as sample heating to vaporize the semi-volatile materials that lead to increased absorption by internal mixing or BrC [57, 62, 64].

The following sections detail the common filter-based and in-situ particle absorption measurement methods and presuppose that (a) the contributions of non-BC absorbers are adequately considered, and (b) an acceptable community standard MAC is applied to derive *eBC*.

Filter transmission measurements The darkening of filters loaded with absorbing atmospheric particles is commonly used to measure particle absorption. The intensity of light measured before (I_0) and after (I) passing through a filter (of thickness x) loaded with particles can produce an absorption coefficient of the particle-filter system (b_{pf}), according to the Beer-Lambert law:

$$I = I_0 e^{-b_{pf}x}$$

Instruments that use this filter transmission technique determine the absorption coefficient of the system by knowing the surface area of the collection filter (A), the flow rate of air passing over the filter (V), the sample time interval (Δt), and the light intensities at the beginning and end of Δt [46, 65–71]:

$$b_{pf} = \frac{A}{V} \frac{\ln\left(\frac{I_0}{I}\right)}{\Delta t}$$

True absorption can only be measured if there is no light scattered off the filter matrix that can be interpreted as absorption. This method also relies on the sample layer being thin to avoid multiple scattering effects of radiation between particles [72]. In practice, these conditions are rarely met, so significant effort to minimize or characterize and correct for these artifacts is necessary to produce accurate b_{Abs} values [eg, 45, 65, 67]. The following corrections are likely necessary for correction of measured transmission to light absorption:

- 1) Multiple light scattering within the filter:

Incident light can scatter from the unloaded filter matrix (membrane or fibers) and increase the sample path, x [73]. This will be dependent on filter type and optical configuration of the instrument [46, 71, 74].

- 2) Filter Loading:

As the filter becomes loaded with absorbing particles, the incident light is absorbed and less light is passed through the filter, which is the basis for the measurement. However, as loading builds, the sample path (x) is decreased, leading to a bias in the calculated b_{Abs} [66, 71]. This correction is dependent on the amount of absorbing material loaded onto the filter and dependent on the particle

optical properties (eg, single scatter albedo (SSA) and particle size [65, 70, 71], which are highly variable depending on source, transport, processing etc. [71, 75–79].

3) Particle Scattering Correction:

As the filter is loaded with scattering particles, incident light is scattered in all directions. This leads to higher filter reflectance and more opportunities for absorbing particles to absorb light. This correction will be dependent on total particle scattering (shape, size, composition, mass) [65, 66]. For the particle soot absorbing photometer (PSAP), approximately 2 % of particle scattering is interpreted as absorption [65, 70], whereas the choice of the Aethalometer filter introduces somewhat less of a scattering artifact [73].

In addition to the corrections, these methods require careful calibration of the filter surface area (A), sample flow rate (V) [65, 66, 71], and may have biases due to liquid-like organics spreading across filter fibers [80–82]. This phenomenon introduces one of the limitations of the filter-based methods in that the particles deposited on the filter may change morphology [46], a property that contributes to both scattering and absorption. Additionally, artifacts related to elevated relative humidity and pressure and temperature fluctuations can influence the quality of measurements [83]. See Fig. 4 for a schematic of the radiation pathways for these methods.

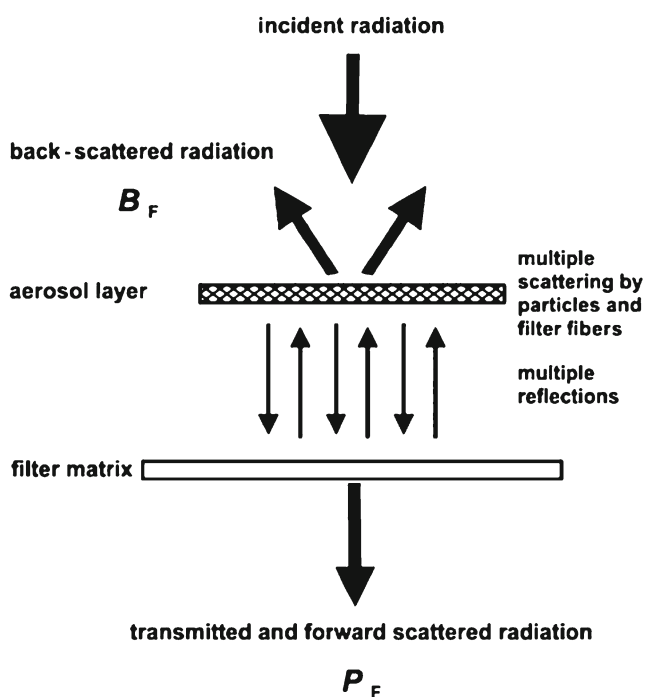


Fig. 4 Schematic of the MAAP radiation pathway, highlighting the forward and backscattered radiation, the multiple scattering within the particle layer and filter. *Aerosol Science and Technology: Evaluation of multiangle absorption photometry for measuring aerosol light absorption.* (39):40–51. Copyright 2005. Mt. Laurel, NJ., Reprinted with permission

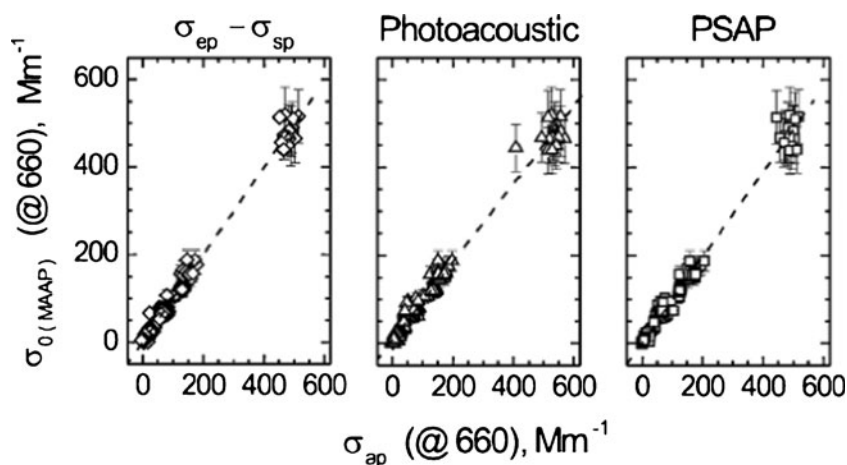
There are numerous applications of the filter transmission method. The integrating plate (IP) [68] or integrating sandwich (IS) [84] methods use optical diffusors to measure the scattered radiation to enable scattering corrections. The IP and IS methods also utilize a membrane filter (with a refractive index that is close to that of atmospheric particles) for sample collection and, therefore, minimizes multiple scattering effects inherent to fiber filters. However, because of the sharp filter–sample interface, the filter loading correction can become significant. The IP and IS methods also do not measure continuously, therefore requiring sample collection followed by offline data collection. Detailed discussions on these particular techniques are provided by Clarke et al. [85], Heintzenberg et al. [86], Horvath [87], and Reid et al. [88].

Advances to the IP and IS methods include instruments such as the aethalometer [67, 71], PSAP [65], and the continuous soot monitoring system (COSMOS) [89]. There are also a number of PSAP variants in use; the continuous light absorption photometer (CLAP; US National Oceanic and Atmospheric Administration, Global Monitoring Division), the PSAP-ITM [90], and the spectral optical absorption photometer [SOAP, 91]. These instruments sample continuously (seconds resolution) over multiple wavelengths, and often have multiple filter spots or automated filter changes for continuous field operation. One downside of these methods is the use of fiber filters that introduce varying degrees of scattering corrections larger than those of the membrane filters used by the IP and IS methods. These methods require significant laboratory experiments using a reference absorption method to determine appropriate correction factors [66, 70, 71, 83, 89, 92–94]. Ultimately, these correction factors lead to measurement uncertainties of 20 %–30 % [8]. Of these techniques, the aethalometer and PSAP are the most commonly used commercial multi-wavelength instruments. Collaud Coen et al. [66] and Virkkula and co-workers [70, 94] provide the most detailed discussions on the aethalometer and PSAP, respectively.

It should be noted that the use of these multi-wavelength instruments for interpreting absorption by BC and BrC is not advised, particularly for conditions where BrC does not contribute a significant amount of absorption. Both Collaud Coen et al. [66] and Virkkula et al. [70] point out that there are wavelength-dependent correction factors, whereas Lack and Langridge [62] show the uncertainties of using these multi-wavelength attribution methods.

Recently, Petzold and co-workers [45, 69] introduced the multi-angle absorption photometer (MAAP), which measures, at multiple angles, the back-scattered light that is used in a radiative transfer model to provide the scattering corrections. In contrast to the other methods, the MAAP does not use empirical corrections. Using this method, they reported that filter loading and multiple scattering artifacts were significantly reduced. The MAAP has a reported uncertainty of about 12 % (see Figs. 4 and 5 for the schematic of the MAAP radiation path

Fig. 5 Comparison of MAAP-measured absorption coefficients with those measured by the difference method, PAS and PSAP. 1:1 line shown as dashed line. Aerosol Science and Technology: Evaluation of multiangle absorption photometry for measuring aerosol light absorption. (39):40–51. Copyright 2005. Mt. Laurel, NJ., Reprinted with permission



and comparisons of MAAP absorption with measurements from a PSAP and a photo-acoustic spectrometer (PAS), the latter instrument discussed in the following section.

Although significant work has been done on the measurement corrections for a variety of filter-based absorption instruments, there is still variable quality of b_{Abs} measured by filter-based methods compared with a b_{Abs} standard, such as the photo-acoustic method (e.g., [96, 97]), the difference of extinction and scattering method (e.g., 64, 96), or the MAAP [66, 69, 97]. Controlled laboratory measurements of simplified BC particles or fresh fossil fuel combustion particles usually provide acceptable comparisons, whereas complex particles from a variety of sources can produce deviations from the reference methods [45, 53, 70, 79, 81, 83, 92, 98–103].

We note here that there are other commercial applications of the filter transmission method, particularly in industry applications where the qualitative Filter Smoke number (e.g., [104]), or Bosch number measurements are used to determine exhaust opacity. We note that these measurements, although used under standardized protocols (ISO8178), have not been subjected to the same rigorous artifact corrections as the aethelometer, PSAP, COSMOS, or MAAP.

Advantages of these well-characterized methods include insensitivity to gas phase absorption and simple, inexpensive operation. The disadvantages included the added uncertainty of the measurement because of the required corrections and the removal and potential alteration of the particles from their suspended state. The general features of the filter-based absorption measurement technique are listed in Table 4.

Photo-acoustic techniques Thermal measurement techniques, including photo-acoustic and interferometric (see following section) techniques are very direct, in situ measurements of the aerosol absorption coefficient at the wavelengths of the light source(s) employed. They quantify the fraction of absorbed optical energy that is rapidly transferred into the surrounding air as illustrated in Fig. 6 for the photo-acoustic technique [46]. Light, generally in the form of a laser beam, is

incident on a particle suspended in air (Fig. 6a); some of the light is transmitted, some scattered, and if the particle has a non-zero imaginary component of the refractive index, some is absorbed and heats the particle (Fig. 6b). For small particles, the heat is rapidly transferred to the surrounding air (Fig. 6c), and if the incident light is power-modulated, an outgoing acoustic wave at the modulation frequency is generated [46]. Generally, an acoustic resonator is employed to enhance the acoustic signal and to exclude and reduce acoustic noise. The resulting acoustic pressure is quantified with a microphone where the resulting signal is proportional to the aerosol absorption coefficient [105].

To calibrate the photo-acoustic technique, the microphone signal needs to be related to the absorption coefficient of the sample. For this purpose, a sample with known absorption coefficient can be employed, for example a gas such as nitrogen dioxide [106], ozone [96], or oxygen [107, 108], which has a well-known absorption spectrum and that can be introduced into the sample volume at a controlled concentration. A related calibration method that does not rely on previously measured absorption coefficients and concentrations introduces an absorbing gas or aerosol with sufficiently high absorption coefficient so that the transmittance and thereby the extinction coefficient can be measured accurately. If

Table 4 Summary of measurement features of filter-based absorption

Measures	Absorption and eBC by MAE
Units	Mm^{-1} , Mass
Collection media	In situ
Collection time	Seconds
Uncertainty	12 %–30 %
Calibration	Involves corrections requiring extensive laboratory experiments to derive eBC
Biases	Elevated RH, possible elevated levels of OC
Measures BrC?	Multi-wavelength units can provide qualitative to semi-quantitative estimates [62]

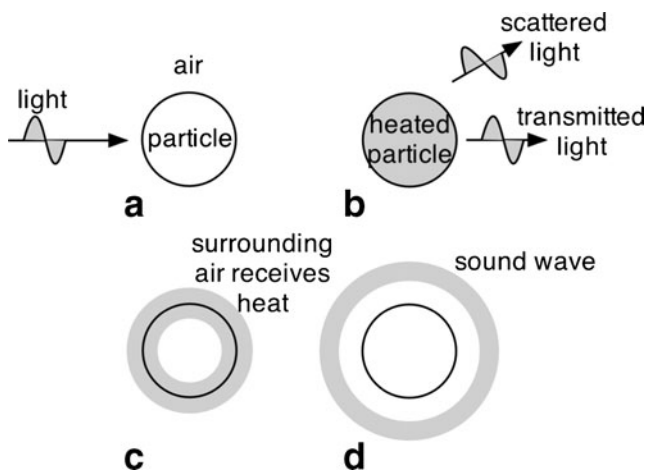


Fig. 6 (A) Light is incident on a particle. (B) Some of the incident light is absorbed by the particle, some is transmitted, and some is scattered. The particle is heated by light absorption. (C) Heat transfers from the particle to the surrounding air. (D) The surrounding air expands upon receiving heat, resulting in an outgoing acoustic wave if the incident light is power-modulated (from [46])

scattering can be neglected (generally true for gases), calibration can be achieved by assuming that the absorption coefficient equals the extinction coefficient. For aerosols, scattering cannot be neglected but the scattering coefficient can be measured with the reciprocal nephelometer [109] that is commonly integrated into photo-acoustic instruments and the absorption coefficient can be obtained by subtracting the scattering coefficient from the extinction coefficient. For the measurement of eBC, a correlation between BC mass and measured absorption needs to be established (e.g., [110, 111]). This is best done at a near-infrared wavelength where contributions of brown carbon to absorption are insignificant.

For gases, not all of the absorbed energy may be available as acoustic energy because it may be transferred into different pathways. This must be taken into account if the instrument is calibrated using gaseous absorption. One example of an alternate, energy-absorbing pathway is the photodissociation of the absorbing molecule, thereby reducing the acoustic signal. The photodissociation of nitrogen dioxide (NO_2), a frequently used calibration gas, is prevalent in the ultraviolet below 398 nm [112]. Another source of energy absorption is collision-induced relaxation that limits conversion of absorbed energy into acoustic energy. This is common for the oxygen molecule [108]. For the case of calibrating with particles, not all of the absorbed energy may be transferred into acoustic energy because (1) part of the energy is used to evaporated semi-volatile particle compounds such as water, thereby reducing the acoustic signal [113–116], (2) because for large particles, the time constant of heat transfer to the surrounding air [117] might be larger than the inverse of the power modulation frequency. In the latter case, the error can be detected and quantified by observing the phase shift of the acoustic signal [46]. Gaseous absorption of the aerosol sample will also contribute to the measured

absorption coefficient. To obtain the absorption coefficient of the particles, wavelengths where gaseous absorption of air is minimized should be used. Any remaining gaseous absorption can be subtracted by periodically or continuously measuring the absorption of particle free (ie, filtered) air [118].

Several research groups and companies have built and are using photo-acoustic instruments for the measurement of aerosol light absorption. Early efforts were often hindered by the use of very large and power-consuming lasers such as argon ion lasers (e.g., [119]), whereas more recently small and efficient diode lasers and diode-pumped solid state lasers are commonly used (e.g., [118, 120]). Some early efforts used radial and azimuthal resonators [121–123], whereas currently longitudinal resonators of half- or full-wavelength length have become more common [46]. The influence of acoustic background noise has been reduced, for example, by placing sample inlets at nodes of the acoustic pressure [118], employing acoustic notch filters [118], using subtraction techniques employing two identical resonators with only one containing a laser beam [96], and by reducing noise from the sample pump with a critical orifice [46]. Such reduction of acoustic background noise, together with the use of phase-sensitive detection techniques and powerful lasers and optical multi-pass cells [96], has yielded detection limits for the measurement of aerosol light absorption below 0.1 Mm^{-1} (60 s averaging time) and an instrument accuracy of $\sim 5\%$ [96]. In addition, the ongoing development of multi-wavelength photo-acoustic instruments [124–128] is important for characterizing the wavelength dependence of aerosols such as brown carbon and mineral dust [46].

Photo-acoustic instruments have been used for characterization of aerosols in ambient air with instruments deployed stationary and on vehicles, including airborne deployment [46]. The early characterization and measurement of eBC and the calibration of filter-based measurements (e.g., [80, 81, 92]) have been complemented with characterization of brown carbon [63, 124, 129–132] and mineral dust [133], and the investigation of the role of particle coatings [53, 63, 132, 134], morphology [135], and humidity induced particle collapse [136] on light absorption. While photo-acoustic instruments have become the “standard” for the accurate measurement of aerosol light absorption [97], deployment is still limited compared with filter-based instrument, and part of their utility has been in improving the calibration of filter-based measurements. The general features of the photo-acoustic measurement technique are listed in Table 5.

Interferometric techniques Light absorption can be measured by photo-thermal methods that alter the density and refractive index (RI) of air molecules or particles that absorb laser radiation [137]. Photo-thermal interferometry (PTI)¹ is the

¹ Here we use PTI for the methods originally described as phase fluctuation optical heterodyne/homodyne spectroscopy (PFLOHS)

Table 5 Summary of measurement features of photo-acoustic techniques

Measures	Absorption and eBC by calibration
Units	Mm^{-1} , Mass
Collection Media	In situ
Collection time	Seconds
Uncertainty	5 %
Calibration	Calibration aerosols and gases
Biases	Large particles ($>2.5 \mu\text{m}$), elevated RH
Measures BrC	At appropriate wavelengths, with appropriate sample conditioning

method most commonly used to measure particle absorption [138–141] and is the focus of this review section.

When particles absorb radiation, the energy is returned to the surrounding air by collisional quenching, which heats the air leading to gas expansion, gas density changes, and RI changes [141]. These changes are measured using an interferometer, where two identical laser beams (split from the same source) pass through almost identical geometric paths. The only difference in beam paths is that the ‘probe’ beam travels through the sample volume and is then recombined with the second ‘reference’ beam after which an interference pattern is measured. When the sample is heated with a ‘sample’ laser (modulated at frequencies $<100 \text{ Hz}$, [142, 143]), the optical path length of the probe beam changes because of the gas density change, which leads to a phase shift between the probe and reference beams, observable in the interference pattern. This phase shift is proportional to the RI change of the sample air, and the amount of energy absorbed by the sample [141, 142, 144, 145].

Theoretically, PTI can achieve detection limits two orders of magnitude lower than PAS [144]; however, early implementations did not achieve such detection limits [96, 141, 142]. This can be attributed to unwanted changes in the optical path length from sample turbulence, temperature gradients, and mechanical vibrations [141, 142, 146]. Signal to noise can be improved by increasing sample and probe laser power and integrated sample volume [141–143], although particle components, including water at elevated RH, can volatilize and create measurement biases (also common to PAS) when subjected to excessive laser power [142, 145]. Probe beam modulation frequency can also be chosen within a certain range to avoid mechanical vibrations, whereas the probe laser wavelength can be chosen to avoid absorption of specific gas or particle species [141, 142, 147, 148].

The PTI signal is linear with high concentrations of absorbing species [141, 145]; however, sample saturation can occur when the phase change between probe and reference beams becomes too large [142] and when the particles are too large to transfer the absorbed energy to the surrounding air

within the probe beam modulation period (an issue common to PTI and PAS) [141, 142]. Measurements of sub-micron particle properties and sample dilution can successfully avoid these issues [141, 142, 145].

PTI calibration for particle absorption has been achieved in a number of ways. Lin and Campillo [141] and Sedlacek [143] measured the PTI phase shift of known concentrations of ethylene or NO_2 , utilizing the known absorption cross section of these gases to determine absorption. Particle mass, calculated from known particle diameters and number concentrations of mono-disperse ammonium sulfate particles, rather than absorption, was correlated to the PTI phase shift by Fluckiger et al. [142].

Due to fundamental instabilities in the various interferometer optical designs that make the technique susceptible to mechanical vibrations [141], the PTI technique has seen very limited application for measuring particle light absorption [141, 142]. To overcome this issue, Moosmüller and Amott [146] introduced a unique interferometer design that virtually eliminated these mechanical instabilities, the folded Jamin interferometer, and this design has proven to be capable of robust visible wavelength light absorption measurements by particles [143, 145, 149]. Sedlacek and Lee [145] showed a 10 % uncertainty in measured absorption and 0.4 Mm^{-1} detection limit (10 s sampling time), in addition to showing accurate comparisons to absorption measured by other techniques (PAS and PSAP). For absorption by particle from laboratory and ambient sources, comparisons of PTI and PSAP to within 4 % were achieved (Fig. 7).

With these recent advances and other advantages over filter-based methods (ie, no particle scattering interferences [143]), and claims of superiority over PAS [142], PTI would appear to

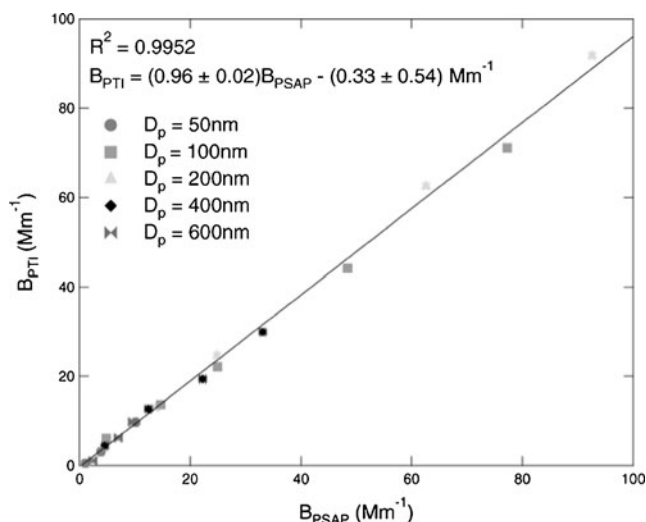


Fig. 7 Figure 3 from Sedlacek and Lee [145], plot of nigrosin absorption coefficients measured by the PTI and Aerosol Science and Technology: Photothermal interferometric aerosol 1813 absorption spectrometry. (41):1089–1111. Copyright 2007. Mt. Laurel, NJ., Reprinted with permission

be a favorable advance for measuring particle absorption, particularly when multi-wavelength PTI instrumentation seems eminently possible [145]. Despite this, PTI remains a research tool with limited applications for measuring particle light absorption.

Comprehensive treatments of the theory of the PTI technique are presented in a number of studies (e.g., [138, 139, 141, 142]), while the technique also finds common application in metrology [150–153]. Moosmüller et al. [144] provided a review of PTI for particle absorption measurements following the critical advance of the folded Jamin interferometer by Moosmüller and Arnott [146]. Since these two publications, only the work of Sedlacek and coworkers [143, 145, 149] has provided any advance to the science on PTI measurement of particle absorption. The general features of the photo-thermal interferometry measurement technique are listed in Table 6.

Remote sensing measurements At the moment, eBC cannot be derived using remote sensing techniques, although a great deal of effort is being invested in finding the means to do so. If it is possible to remotely measure aerosol light absorption or single scattering albedo (SSA) at multiple wavelengths, it may be possible to distinguish between the dominant aerosol types that absorb in the visible and near-visible wavelengths, more specifically BC, BrC, and mineral dust [154]. The derivation of aerosol light absorption by remote sensing techniques has in itself been challenging with mainly multi-angle techniques showing success. Single-angle techniques such as monostatic lidar [155] or simple sun photometry [156] cannot distinguish the scattering and absorption components of extinction. Advanced high-resolution lidar [157–161] and Raman lidar systems [162–164] can measure aerosol particle extinction and backscatter coefficients; however, the 4π -integrated aerosol scattering coefficient cannot be derived from the aerosol backscatter coefficient without knowledge of the particle-phase function that depends on the size distribution and refractive indices of the ensemble of particles that scatter and absorb the incident light. It has been found, however, that mineral dust aerosol extinction coefficients depend much less

on the imaginary part of the refractive index than mineral dust backscatter coefficients; hence, their ratio may provide some indication of mineral dust aerosol light absorption [165]. Multi-wavelength Raman lidar has been used for the retrieval of the SSA for spherical particles [166] and bi-static lidar systems may be able to derive significant parts of the aerosol phase function; hence, there is some potential for deriving light absorption by remote sensing, possibly in combination with sun photometry [167].

The retrieval of aerosol light absorption, using the measurement of diffuse and direct solar radiation [168], is being attempted with multi-angle and multi-wavelength observations of sun and sky radiances with sun and sky scanning radiometers, as implemented by AERONET [169] or multi-filter rotating shadowband radiometers such as those deployed by the ARM program [170, 171]. These retrievals require sophisticated inversion algorithms that are based on models of the vertical profiles of atmospheric particles and optical calculations of their properties for spherical or spheroidal particles. These retrievals yield column-averaged aerosol light absorption, which is commonly given either as SSA or absorption optical depth [172–175]. Spectral SSA data from AERONET have been used to derive concentrations of mineral dust iron and BC during dust and pollution episodes. Some of these retrievals show reasonable agreement with chemical analyses [176]. Measurements of aerosol light absorption with sun and sky radiometer networks are extremely useful for the characterization of aerosol light absorption for specific aerosol types and for determining their atmospheric distribution [154, 177, 178]. However, these observations yield column-integrated measurements and, therefore, “effective” values, potentially including different aerosols and mixing states. Additional comparisons of remote sensing with direct in-situ measurements of aerosol light absorption would be desirable.

The retrieval of aerosol light absorption from satellite measurements is even more challenging [179] because of the spatial and temporal variations of the earth’s surface albedo that often dominates the measured radiances. Proposals have been made to use critical reflectance [180, 181] and sun glint over oceans [182], yet only UV measurements, originally designed for the monitoring of stratospheric ozone, are currently employed operationally, with accuracies that still remain open for debate. Critical reflectance methods and multi-angle measurements are showing some promise, as are novel multi-angle, polarimetric measurements, whose objective are more accurate SSA retrievals.

Sensors that are currently being used to retrieve aerosol optical properties include the total ozone mapping spectrometer (TOMS) and the ozone-monitoring instrument (OMI). TOMS was deployed on board the Nimbus-7 (1979–1992), Meteor-3 (1991–1994), and Earth Probe (1996–2006) satellites. Data products from TOMS include the aerosol index (AI), calculated from the difference in surface reflectivities derived from two

Table 6 Summary of measurement features of photo-thermal interferometry

Measures	Absorption and eBC by calibration
Units	Mm^{-1} , mass
Collection media	In situ
Collection time	Seconds
Uncertainty	10 %
Calibration	Calibration gases of known concentrations
Biases	Large particles ($>2.5 \mu\text{m}$), elevated RH
Measures BrC	With instrument development

UV channels [183]. The AI, although effective for the detection of aerosols above land and ocean surfaces, including the detection of absorbing aerosols (ie, smoke and mineral dust) above ice, snow, and clouds [184], and qualitatively mapping the distribution of aerosol light absorption, does not provide a quantitative measure of aerosol light absorption. The TOMS observations, when used in conjunction with the moderate resolution imaging spectroradiometer (MODIS) [185] measurements in the visible spectrum, have been utilized to retrieve the SSA [186–188]. MODIS observations have also been used to implement the critical reflectance method [180, 181] for retrieving aerosol SSA [189]. The multi-angle imaging spectroradiometer (MISR), operating in the visible-near-IR spectrum, on board the Terra satellite (1999–present), is able to distinguish weakly- from strongly absorbing aerosol types by retrieving the SSA [190–193].

There was the expectation that the state of satellite aerosol light absorption retrieval would be improving after the 2009 launch of the aerosol polarimetry sensor (APS) on board the Glory satellite [194, 195]; however, this satellite experienced a launch failure and never reached orbit. APS data products, based on the multi-angle polarimetric capabilities [194, 196] were to include aerosol SSA in at least three spectral channels for fine and coarse modes with an SSA uncertainty of 0.03. The general features of remote sensing measurement technique are listed in Table 7.

Refractory black carbon

Refractory black carbon is measured using laser induced incandescence (LII). LII occurs when light-absorbing particles are illuminated by intense radiation and heated to temperatures much higher than the surrounding air. The high temperature particles emit grey/blackbody radiation that can be detected and used to derive the mass of the illuminated particle or particles. At sufficient light intensities, particles are heated to their vaporization temperature (or boiling point), which for rBC is approximately 4300 K [197]. At this point, the energy absorbed is approximately balanced by the energy lost via vaporization and radiation. The LII signal decreases as the

particle shrinks since less light is absorbed and emitted by the evaporating particle.

Investigations into rBC using LII fall into two sub-groups, those using pulsed lasers and those using continuous lasers. Interference during Raman spectroscopy measurements motivated the earliest LII work on rBC produced in flames [198]. Weeks and Duley [199] showed that LII signals could be related to particle size for carbon black; however, it was the subsequent theoretical and observational studies [200, 201] that showed that LII could be used to directly derive the rBC properties in flames. For example, Melton [200] showed that the magnitude of the incandescence signal could be related to the volume concentration of rBC in the measurement region.

The LII rBC experiments employ pulsed (~20 ns), high intensity lasers that illuminate a point source or a two-dimensional measurement volume as illustrated in the example shown in Fig. 8 [202]. The ability to visualize the spatial distribution of rBC in the measurement volume was particularly useful for studies of combustion systems (e.g., [203]), particularly those investigating turbulent and/or flickering flames where slower, scattering-based approaches were insufficient [204]. The decay of the LII signal was related to the primary particle size [205] because of the dependence of the particle cooling behavior on surface area. LII was also combined with two-color pyrometry (measuring the light emitted over different wavelength ranges) to determine the temperatures of particles in combustion systems [206]. Pulsed LII has also been combined with light scattering measurements to investigate rBC morphology [207]. Besides rBC measurements in flame combustion processes, pulsed LII techniques were eventually applied to measurements of diesel emissions [208], laboratory-scale gas flares [209], dusts [210], and atmospheric rBC measurements (e.g., [211]).

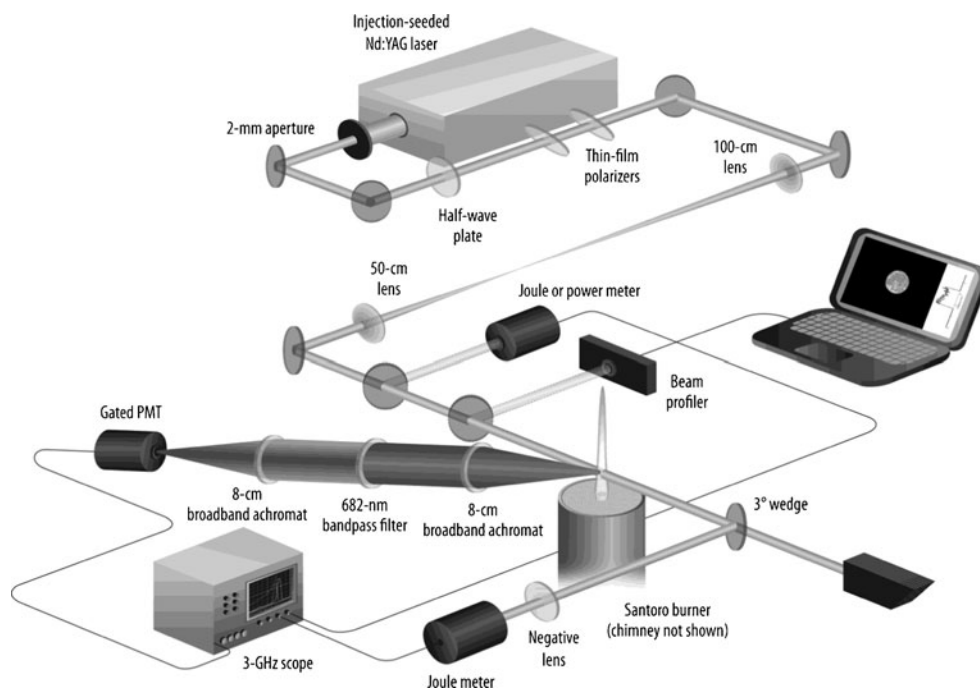
Stephens et al. [212] developed an alternative method for measuring LII of single particles for the purpose of identifying particle composition using two-color pyrometry. Unlike previous pulsed LII systems, Stephens et al. [212] illuminated particles by passing them directly through a continuous, intracavity, solid-state laser beam. Their design also featured a detector to measure light scattered by individual particles, which was used to estimate their size. Although the main motivation for the instrument was the identification of particle types based on vaporization temperatures, Stephens et al. [212] also highlighted the technique's ability to measure atmospheric rBC. The design was eventually commercialized as the single particle soot photometer (SP2) and has been used for atmospheric rBC measurements for roughly the last decade. Figure 9 illustrates the configuration of the SP2 for illuminating single aerosol particles and measuring the scattered and emitted components of the light.

The high sensitivity and time resolution afforded by the single particle measurements provided by the SP2 make the instrument suitable for ambient measurements in pristine

Table 7 Remote sensing technique summary

Measures	Light absorption and extinction
Units	Aerosol optical depth
Collection media	None
Collection time	Variable
Uncertainty	Unknown
Calibration	None
Biases	Unknown
Measures BrC	No

Fig. 8 From Michelsen et al. [202]. This schematic is showing the fundamental components of the experimental apparatus. Abbreviations are as follows: B: bandpass filter; CB: camera control box; CL: signal collection lenses; DG, digital delay generators; F: colored glass filter; HV: high voltage power supply; ICCD: intensified charge coupled detector; IL: imaging lens; LWDM: long working distance monochromator; M: ¼ meter monochromator; PD: photodiode; PMT: photomultiplier tube; SH: laser sheet forming optics; SL: adjustable slit; VCR; video cassette recorder

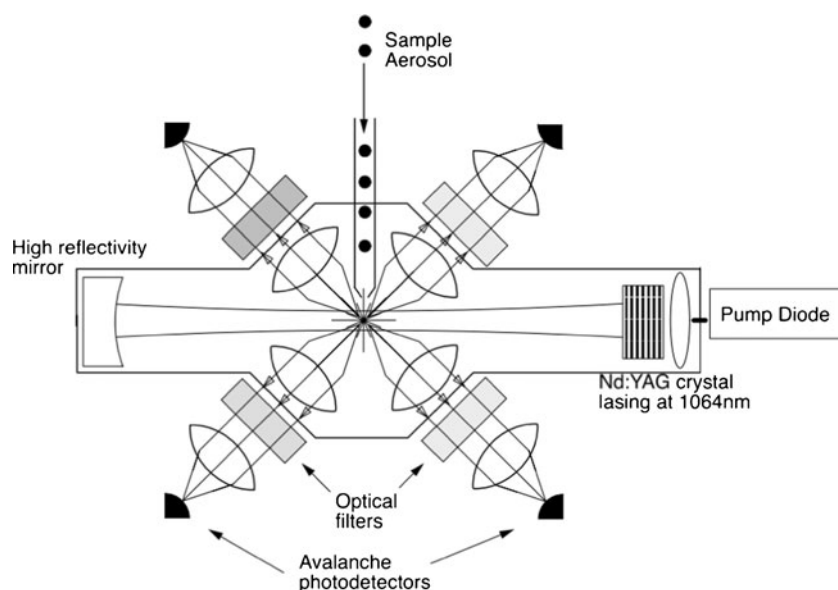


environments. The earliest applications of the SP2 focused on airborne characterization of rBC in the lower stratosphere/upper troposphere region [95, 213]. The instrument was subsequently widely adopted for not only aircraft-based measurements but also field- and laboratory-based measurements of ambient rBC (e.g., [102, 214–216]). McConnell et al. [217] showed that the SP2 could be applied to measure rBC in liquid samples (ie, melt streams from ice cores), and the approach has since been applied in a number of studies measuring rBC concentrations and properties in ice (e.g., [218, 219]), snow [220, 221], lake water [222],

and precipitation [223]. Several investigators have also developed more advanced methods for interpreting the scattering measurements made by the SP2 to infer information regarding coatings and/or other particles mixed with rBC in individual particles [215, 224–226]. These analyses have enabled a number of investigations into atmospheric processing of rBC and the role coatings have on rBC optical properties (e.g., [227]) and hygroscopicity [228, 229].

Uncertainties for pulsed LII measurement methods stem mainly from the need to model the physical behavior of the measured rBC in order to interpret LII signals and determine

Fig. 9 Schematic of the SP2 optical head from Schwarz et al. [95]



volume concentrations and size distributions [230]. At high laser intensities, rBC particles vaporize and can undergo restructuring [231], which alters their optical properties and LII signals. Other factors include changes in rBC absorption and extinction properties at different temperatures, expansion of particles as they heat, changes in their refractive index that affect the interpretation of LII signals, and mechanisms through which particles interact with the carrier gas [230]. Measurements of the primary particle size depend on the carrier gas properties and structure of the rBC aggregates. If the aggregate collapses, some primary particles are shielded from the surrounding air, which affects the aggregate cooling rate and subsequent LII signal decay, leading to a larger inferred primary particle size. Chan et al. [211] used this behavior as a diagnostic for rBC aggregate collapse in atmospheric measurements. The majority of pulsed LII studies have focused on combustion environments where coatings on rBC particles are relatively minor. For atmospheric applications aged rBC particles can acquire substantial coatings (e.g., [56, 95]). At high laser intensities, these coatings will evaporate and should not affect measurement of the volume fraction [211]. If coatings or mixed particles survive the initial particle heating, they might affect the determination of the primary particle size from the observed LII signal decay, as they will affect the cooling rate of the mixed particle.

For continuous LII measurements, several studies have investigated the response of the SP2 to different rBC calibration standards, ambient rBC, rBC mixed with other material, and rBC with different morphologies [95, 102, 149, 232–234]. These works have shown that the radiation emitted by rBC particles at their vaporization temperatures is linearly proportional to rBC mass and independent of mixing state and morphology over a wide range of conditions. The lower particle size threshold for the SP2 is limited by the requirement that particles must be heated to their vaporization temperature, and has been found to be 0.7 fg (90 nm volume equivalent diameter) for reasonable laser intensities [235]. The upper size limit of the SP2 is largely governed by the amplification settings on the SP2 thermal emission detectors and the sampling efficiency of large particles to the SP2 detection region. Schwarz et al. [220] have shown that the SP2, when optimized for large particle detection, can adequately measure rBC up to volume equivalent diameters of 2 μm . In most ambient environments, the amount of rBC mass falling outside the SP2 detection range is assumed to be small (10 %–20 %); however, care should be taken when interpreting measurements of fresh emissions where the rBC size distribution may shift to smaller sizes or when examining number distributions where smaller particles make a more significant contribution to total number concentrations compared with total mass. At high particle concentrations, multiple particles can be present in the sensing volume, so care should be taken to avoid interpreting coincident LII signals as originating from a single, larger particle [236].

The choice of calibration material also affects uncertainties in SP2 LII measurements. Different effective densities and emissivities have been found for atmospheric rBC calibration materials, which translate to different LII signals for fixed amounts of rBC mass. Moteki and Kondo [197] showed that combining the SP2 with an independent particle mass measurement downstream of a heated inlet system allowed direct comparison of the LII signal and rBC mass. This work and follow-up studies [234] have shown that rBC in urban environments has an LII response closest to fullerene soot and that the SP2 response to different calibration materials can be related to ambient rBC response using empirical corrections. Similar measurements are needed in non-urban environments to verify that relationships hold for all forms of atmospheric rBC.

Additional uncertainties arise when interpreting continuous LII measurements of rBC present in liquid samples; however, these lie outside the scope of this review. Schwarz et al. [220] is a good starting point for readers interested in more details on uncertainties associated with these methods. Although the identification of coatings associated with rBC also has significant uncertainties, these are not strictly related to the measurement of rBC mass, so we do not include them here. Readers interested in more details are encouraged to consult the original references [215, 224–226].

There are several differences between pulsed and continuous LII methods that we summarize briefly here. Pulsed LII measurements represent the average properties of an ensemble of rBC-containing particles in the sample volume. Particles are illuminated by intense laser light on the order of nanoseconds. The measured parameters are the rBC volume fraction and primary particle size. Two-dimensional LII systems also provide qualitative information on the distribution of rBC within the measurement volume. The technique has mainly been applied to combustion environments, though it is now seeing increasing use in atmospheric applications. The continuous LII method illuminates individual particles on the order of microseconds. The particle mass is determined from the peak LII signal measured when the particle reaches its vaporization temperature. Simultaneous light scattering measurements are used to infer particle-coating properties, whereas measurements of the LII signal over different wavelength ranges are used to infer particle composition. The technique has been used primarily for atmospheric measurements of rBC but is being extended to measure rBC in liquids. Both pulsed and continuous LII methods have uncertainties related to the absorption and emission properties of rBC, particularly when it is heated to high temperatures. It is difficult, however, to extrapolate uncertainties from the two different methods because of differences in how the LII signals are measured and interpreted. That said, we are unaware of any studies that have compared measurements from the two approaches, and much could be learned about both techniques by such a comparison.

A recently developed technique related to LII takes advantage of the selective vaporization that occurs when measuring rBC-containing particle composition using a mass spectrometer. The aerodyne soot particle aerosol mass spectrometer (SP-AMS) is a development of the traditional AMS [237] that replaces the particle vaporization source, a heated metal surface, with the same continuous laser system used in the SP2 [238]. The SP-AMS is not a traditional LII measurement in that the light emitted by the process is not measured. Instead, ions generated from the vapors produced by the LII process are measured to provide detailed chemical information related to both the rBC and any associated coatings. The technique has already been used to investigate atmospheric rBC [56, 238]. A detailed discussion of the uncertainties associated with this technique are beyond the scope of this review, but interested readers should consult Onasch et al. [238] for a detailed discussion of the technique. The general features of laser-induced incandescence measurement techniques are listed in Table 8.

Morphology of atmospheric EC

Freshly combusted BC particles are emitted as sub-micron sized aggregates of coagulated spherical primary particles (monomers; see Fig. 10) from high-temperature combustion systems [46, 239, 240]. These monomers can lead to varied morphology that BC aggregates can assume in the atmosphere and can significantly affect their physical, chemical, and optical properties. Therefore, experimental techniques to characterize their morphology are of prime interest to researchers.

Transmission electron microscopy (TEM) has revealed the structure of these monomers as containing onion-like layers of graphitic platelets [241, 242], which are not parallel as in pure, single-crystal graphite, but disordered and wrinkled [11]. In the past four decades, laboratory investigations and computer simulation studies have shown that formation of BC in combustion systems proceeds via a

three-dimensional diffusion-limited cluster aggregation (DLCA) growth mechanism [243–245], giving rise to their non-Euclidean particle geometry. Since the application of fractal mathematics to the area of condensed matter physics by Forrest and Witten [246], the morphology of EC aggregates has been described using a quantifiable mathematical parameter, the fractal dimension, D_f . Estimation of this parameter leverages from the fact that within a certain length scale, EC aggregates are scale-invariant, that is, their irregularity is similar between the limits of monomer and aggregate size. Mathematically, the number of monomers per aggregate, N , scales with the radius of gyration, R_g as [247]:

$$N = k_0 (R_g/d_p)^{D_f} \quad (1)$$

where k_0 is the fractal pre-factor and d_p is the average monomer diameter. The aggregate's D_f is considered to be the key property in influencing its physical, chemical, and optical properties.

Past simulation and theoretical investigations have shown that the process of DLCA always yields an asymptotically converging D_f value of 1.8 [247–249]. However, one often finds the D_f of atmospheric BC aggregates significantly deviating from this value. Freshly emitted BC aggregates often undergo atmospheric processing, resulting in morphologic restructuring [55, 136]. Consequently, these aggregates assume sphere-like, collapsed morphologies with a much higher D_f (close to three).

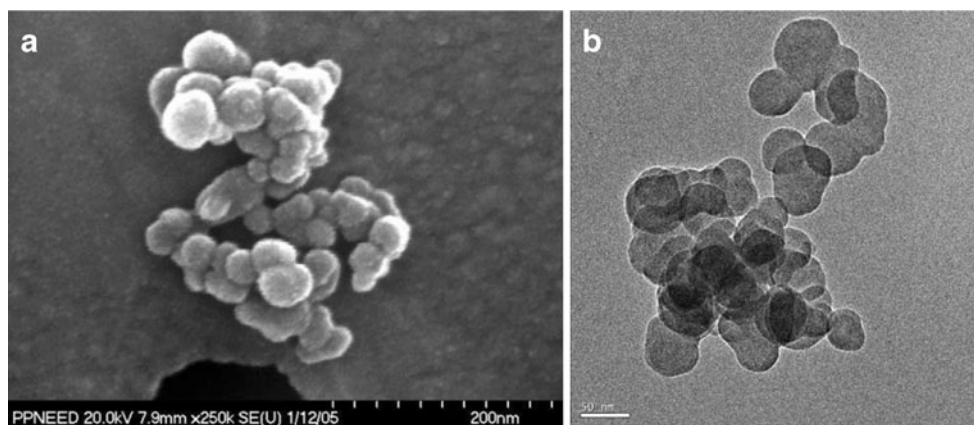
Practical methods most commonly used for determination of aggregate morphologic properties are in situ light scattering measurements, characterization, and combination of different physical diameters, and quantitative analysis of digitized ex situ transmission/scanning electron microscopy (TEM/SEM) two-dimensional images [135, 239, 240, 247, 250]. In situ measurement of D_f and size of aggregates from angular light scattering measurements involve analysis of scattered light intensity from an ensemble of aggregates in q (or inverse length) space [247]. The slope of the linear regions in the intensity versus q plots is analyzed to calculate the average D_f of aggregates. The main limitation of this in situ technique is that when using this method it becomes too complicated for extracting the accurate structural properties for polydisperse aggregate size distributions. Furthermore, the instrumentation required for this measurement methodology is often not portable to active combustion sites, making it difficult to study real-world aerosol particles.

Ex situ techniques involving image analysis of aggregates have found wide use in determining D_f of aggregates collected from both laboratory and field studies [135, 239, 251–253]. The Ensemble method (EM) is one of the more popular aggregate morphology characterization techniques used by researchers

Table 8 Laser-induced incandescence technique summary

Measures	rBC
Units	Mass concentration
Collection media	None – in situ
Collection time	Milliseconds to seconds
Uncertainty	5 %–10 %
Calibration	Commercially available light absorbing particles. Fullerene for the SP2
Biases	In the SP2, underestimation of rBC mass if significant mass is in particles smaller or larger than lower or upper size threshold.
Measures BrC	No

Fig. 10 Scanning (A) and transmission (B) electron microscope images of typical elemental carbon aggregates emitted from high-temperature combustion systems such as engines and biomass burning



[239, 253–255]. This technique involves determining the values of N , R_g , d_p from aggregate images, and then using Eq. 1 to determine the D_f of aggregates. The main drawback associated with this technique is the difficulty of obtaining accurate three-dimensional information about aggregate morphologic variables such as N and R_g required for calculating the three-dimensional D_f of aggregates. Although these variables are not directly deducible from a two-dimensional image of an aggregate, empirical relationships between measurable two-dimensional and three-dimensional properties of aggregates have been derived from simulation and experimental studies to remedy this situation and assist researchers in their analyses [256–264].

Over the past three decades, researchers have also employed more simplistic image analysis routines such as the nested squares method (NSM) and the perimeter method (PM), which directly determine the D_f of aggregates from their two-dimensional images. These techniques do not use the relationship between different aggregate properties of Eq. 1 to determine aggregate D_f . Determining D_f with the NSM technique involves drawing boundaries (e.g., squares or circles) of increasing size upon a two-dimensional, pixelated image of a fractal aggregate centered on the aggregate center of mass [252, 255]. For every boundary, the number of pixels occupied by the particle is counted. The D_f is calculated as the linear regression slope of the linear portion of the log–log curve generated by plotting boundary size against pixel count. The PM calculates D_f by drawing grids of differing box sizes upon a two-dimensional image of a fractal aggregate [255, 265]. Given a grid with a certain box size, the number of grid boxes through which the perimeter passes is counted. A grid with a different box size is then drawn, and the number of grid boxes through which the perimeter passes is counted once again. This process is repeated, and the logarithm of the box size is plotted against the logarithm of the box count, providing the D_f as the slope.

It is noteworthy to mention that researchers using NSM and PM oftentimes assume that the fractality of the aggregates is

conserved between two- and three-dimensions within the aggregate length scale. In other words, the assumption is that the calculated two-dimensional D_f equals the three-dimensional D_f . Regarding this assumption, a number of studies [255, 261, 264, 266] have cautioned that factors like orientation of aggregates in the image, location of their center of mass, and the distribution of the primary particles around the center of mass could cause systematic differences between the three-dimensional D_f and the two-dimensional D_f determined from a two-dimensional projection of the three-dimensional structure. Two studies [261, 264] have shown, using computer simulations, that compared to a suspended aggregate, the projected area and length can be overestimated in the two-dimensional projection depending on the resting position of the aggregate on the microscopy filter substrate. More recently, Chakrabarty and coworkers [255] individually tested the accuracies of EM, NSM, and PM in predicting three-dimensional D_f of two-dimensional aggregate images by applying them to a statistically significant (~2500) number of projected images of all stable orientations of computer-generated three-dimensional fractal aggregates with D_f ranging between 1.0 and 3.0. Their results showed that of the three methods, the only method that can be

Table 9 Morphology technique summary

Measures	BC structure, fractal dimension
Units	Fractal dimension
Collection media	Nuclepore filter substrate or transmission electron microscopy grids
Collection time	Minutes to hours
Uncertainty	Large uncertainties for nested square and perimeter methods. Low uncertainty for ensemble method
Calibration	None
Biases	Organic carbon coating on BC monomers
Measures BrC	No

used to reliably determine D_f from two-dimensional images is the EM. Both the NSM and the PM yielded many overlapping values of two-dimensional D_f for differing values of three-dimensional D_f resulting in a non-one-to-one relationship and large margins of error. The general features of morphologic measurement techniques are listed in Table 9.

Summary

Recent attention paid to the climate and health effects of atmospheric black carbon (BC) [8, 267] have led to detailed discussions on the general and technical definitions of BC and the terminology of BC derived from various measurement methods. Decades of research and a fundamental complexity in the physical, chemical, and optical properties of BC have led to a variety of ill-defined or confusing terminology and a variety of measurement methods. Bond et al. [8] and Petzold et al. [6] provide general definitions and four fundamental physical property definitions of BC. Petzold et al. [6] further define the terminology of the products of various measurement methods that utilize the physical properties of BC listed above.

In this paper, we have reviewed the measurement methods that correspond to the terminology descriptions of Petzold et al. [6]. Basic measurement principles, advantages, disadvantages, uncertainties, and references for further reading are described. Measurements of the mass of elemental carbon (EC) using the combustion properties of the material, the SP² bonded carbon, insolubility, and the fundamental morphologic properties are discussed. Measurements of the mass of equivalent BC (*eBC*) using the fundamental property of light absorption are provided (filter-based absorption), (photo-acoustic absorption), and (photo-thermal interferometry). A review of the measurement of aerosol light absorption using remote sensing, which requires further scientific advances to derive *eBC* is provided. Measurements of the mass of refractory BC (*rBC*) using the fundamental vaporization properties are described (laser induced incandescence).

The information that has been put forth in this review was compiled with the goal of helping students, engineers, and researchers in many fields to become better oriented to the many facets of black carbon and to expand their knowledge base of the many techniques that are currently employed to measure these facets.

Acknowledgments D.A.L. is funded through the NOAA Climate Program Office. The work of H.M. and R.C. has been supported by NASA EPSCoR under Cooperative Agreement no. NNX10AR89A, NASA ROSES under grant no. NNX11AB79G, the National Science Foundation under grant no. AGS-1040046, and the US Department of Energy Atmospheric System Research program.

Open Access This article is distributed under the terms of the Creative Commons Attribution License which permits any use, distribution, and reproduction in any medium, provided the original author(s) and the source are credited.

References

1. DeMott PJ, Petters MD, Prenni AJ, Carrico CM, Kreidenweis SM, Collett JL, Moosmüller H (2009) Ice nucleation behavior of biomass combustion particles at cirrus temperatures. *J Geophys Res* 114 (D16205):doi:10.1029/2009JD012036
2. Petters MD, Parsons MT, Prenni AJ, DeMott PJ, Kreidenweis SM, Carrico CM, Sullivan AP, McMeeking GR, Levin E, Wold CE, Collett JL, Moosmüller H (2009) Ice nuclei emissions from biomass burning. *J Geophys Res* 114 (D07209):doi:10.1029/2008JD011532
3. Albrecht BA (1989) Aerosols, cloud microphysics, and fractional cloudiness. *Science* 245(4923):1227–1230. doi:10.1126/Science.245.4923.1227
4. Twomey SA, Piepgrass M, Wolfe TL (1984) An assessment of the impact of pollution on global cloud albedo. *Tellus* 36B(5):356–366
5. Smith KR, Jerrett M, Anderson HR, Burnett RT, Stone V, Derwent R, Atkinson RW, Cohen A, Shonkoff SB, Krewski D, Pope CA, Thun MJ, Thurston G (2009) Health and climate change 5: public health benefits of strategies to reduce greenhouse-gas emissions: health implications of short-lived greenhouse pollutants. *Lancet* 374(9707):2091–2103. doi:10.1016/S0140-6736(09)61716-5
6. Petzold A, Ogren JA, Fiebig M, Laj P, Li S-M, Baltensperger U, Holzner-Popp T, Kinne S, Pappalardo G, Sugimoto N, Wehrli C, Wiedensohler A, Zhang X-Y (2013) Recommendations for the interpretation of “black carbon” measurements. *Atmos Chem Phys Discuss* 13:9485–9517
7. US Environmental Protection Agency (2012) Report to Congress on Black Carbon. EPA-450/R-412-001
8. Bond TC, Doherty SJ, Fahey DW, Forster PM, Berntsen T, DeAngelo BJ, Flanner MG, Ghan S, Kärcher B, Koch D, Kinne S, Kondo Y, Quinn PK, Sarofim MC, Schultz MG, Schulz M, Venkataraman C, Zhang H, Zhang S, Bellouin N, Guttikunda SK, Hopke PK, Jacobson MZ, Kaiser JW, Klimont Z, Lohmann U, Schwarz JP, Shindell D, Storelvmo T, Warren SG, Zender CS (2013) Bounding the role of black carbon in the climate system: a scientific assessment. *J Geophys Res* 118(11):5380–5552. doi:10.1002/jgrd.50171
9. Ogren JA, Charlson RJ (1983) Elemental carbon in the atmosphere: cycle and lifetime. *Tellus* 35B(4):241–254
10. Andreae MO, Gelencsér A (2006) Black carbon or brown carbon? The nature of light-absorbing carbonaceous aerosols. *Atmos Chem Phys* 6:3131–3148
11. Bond T, Bergstrom R (2006) Light absorption by carbonaceous particles: an investigative review. *Aerosol Sci Technol* 40(1):27–67
12. Shah JJ, Rau JA (1990) Carbonaceous species methods comparison study: interlaboratory round robin interpretation of result, final report to Research Division California Air Resources Board, Project A832-154. Sacramento, CA 95812
13. Graber ER, Rudich Y (2006) Atmospheric HULIS: how humic-like are they? A comprehensive and critical review. *Atmos Chem Phys* 6:729–753
14. Pósfai M, Gelencsér A, Simónics R, Arató K, Li J, Hobbs PV, Buseck PR (2004) Atmospheric tar balls: particles from biomass and biofuel burning. *J Geophys Res* 109 (D06213):DOI:10.1029/2003JD004169
15. Eller PM, Cassinelli ME (1996) Elemental Carbon (Diesel Exhaust): Method 5040. In: NIOSH Manual of Analytical Methods, 4th ed. (1st supplement). National Institute for Occupational Safety and Health (NIOSH): Cincinnati, OH

16. Birch ME (1998) Analysis of carbonaceous aerosols: interlaboratory comparison. *Analyst* 123(5):851–857
17. Chow JC, Watson JG, Lowenthal DH, Solomon PA, Magliano KL, Ziman SD, Richards LW (1993) PM₁₀ and PM_{2.5} compositions in California's San Joaquin Valley. *Aerosol Sci Technol* 18(2):105–128
18. Chow JC, Watson JG, Pritchett LC, Pierson WR, Frazier CA, Purcell RG (1993) The DRI thermal/optical reflectance carbon analysis system: description, evaluation and applications in US air quality studies. *Atmos Environ* 27A(8):1185–1201
19. Watson JG, Chow JC, Chen L-WA (2005) Summary of organic and elemental carbon/black carbon analysis methods and intercomparisons. *Aerosol Air Qual Res* 5(1):65–102
20. Birch ME, Cary RA (1996) elemental carbon-based method for monitoring occupational exposures to particulate diesel exhaust. *Aerosol Sci Technol* 25(3):221–241
21. Huntzicker JJ, Johnson RL, Shaw JJ, Cary RA (1982) Analysis of organic and elemental carbon in ambient aerosol by a thermal-optical method. In: Wolff GT, Klimisch RL (eds) *Particulate carbon: atmospheric life cycle*. Plenum Press, New York, pp 79–88
22. Fung K, Chow JC, Watson JG (2002) Evaluation of OC/EC speciation by thermal manganese dioxide oxidation and the IMPROVE Method. *J Air Waste Manag Assoc* 52(11):1333–1341
23. Subramanian R, Khlystov AY, Robinson AL (2006) Effect of peak inert-mode temperature on elemental carbon measured using thermal-optical analysis. *Aerosol Sci Technol* 40(10):763–780
24. Baumgardner D, Popovicheva O, Allan J, Bernardoni V, Cao J, Cavalli F, Cozic J, Diapouli E, Eleftheriadis K, Genberg PJ, Gonzalez C, Gysel M, John A, Kirchstetter TW, Kuhlbusch TAJ, Laborde M, Lack D, Müller T, Niessner R, Petzold A, Piazzalunga A, Putaud JP, Schwarz J, Sheridan P, Subramanian R, Swietlicki E, Valli G, Vecchi R, Viana M (2012) Soot reference materials for instrument calibration and intercomparisons: a workshop summary with recommendations. *Atmos Meas Tech* 5:1869–1887. doi:10.5194/amt-5-1869-2012
25. Chow JC, Watson JG, Crow D, Lowenthal DH, Merrifield T (2001) Comparison of IMPROVE and NIOSH carbon measurements. *Aerosol Sci Technol* 34(1):23–34
26. Schmidt MWI, Masiello CA, Skjemstad JO (2003) Final recommendations for reference materials in black carbon analysis. *EOS* 84(52):582–583
27. Schmidt MWI, Skjemstad JO, Czimeczik CI, Glaser B, Prentice KM, Gelinás Y, Kuhlbusch TAJ (2001) Comparative analysis of black carbon in soils. *Glob Biogeochem Cycles* 15(1):163–167. doi:10.1029/2000gb001284
28. Schauer JJ, Mader BT, Deminter JT, Heidemann G, Bae MS, Seinfeld JH, Flagan RC, Cary RA, Smith D, Huebert BJ, Bertram T, Howell S, Kline JT, Quinn P, Bates T, Turpin B, Lim HJ, Yu JZ, Yang H, Keywood MD (2003) ACE-Asia intercomparison of a thermal-optical method for the determination of particle-phase organic and elemental carbon. *Environ Sci Technol* 37(5):993–1001
29. Cavalli F, Viana M, Yttri KE, Genberg J, Putaud JP (2010) Toward a standardized thermal-optical protocol for measuring atmospheric organic and elemental carbon: the EUSAAR protocol. *Atmos Meas Tech* 3(1):79–89
30. Piazzalunga A, Bernardoni V, Fermo P, Valli G, Vecchi R (2011) Technical note: on the effect of water-soluble compounds removal on EC quantification by TOT analysis in urban aerosol samples. *Atmos Chem Phys* 11(19):10193–10203. doi:10.5194/Acp-11-10193-2011
31. Novakov T, Corrigan CE (1995) Thermal characterization of biomass smoke particles. *Mikrochim Acta* 119(1/2):157–166. doi:10.1007/Bf01244864
32. Boparai P, Lee JY, Bond TC (2008) Revisiting thermal-optical analyses of carbonaceous aerosol using a physical model. *Aerosol Sci Technol* 42(11):930–948
33. Wang Y, Chung A, Paulson SE (2010) The effect of metal salts on quantification of elemental and organic carbon in diesel exhaust particles using thermal-optical evolved gas analysis. *Atmos Chem Phys* 10(23):11447–11457. doi:10.5194/Acp-10-11447-2010
34. Yang H, Yu JZ (2002) Uncertainties in charring correction in the analysis of elemental and organic carbon in atmospheric particles by thermal/optical methods. *Environ Sci Technol* 36(23):5199–5204
35. Conny JM, Klinedinst DB, Wight SA, Paulsen JL (2003) Optimizing thermal-optical methods for measuring atmospheric elemental (black) carbon: a response surface study. *Aerosol Sci Technol* 37(9):703–723
36. Chow JC, Watson JG, Chen L-WA, Arnott WP, Moosmüller H, Fung K (2004) Equivalence of elemental carbon by thermal/optical reflectance and transmittance with different temperature protocols. *Environ Sci Technol* 38(16):4414–4422
37. Sadezky A, Muckenhuber H, Grothe H, Niessner R, Pöschl U (2005) Raman microspectroscopy of soot and related carbonaceous materials: spectral analysis and structural information. *Carbon* 43(8):1731–1742. doi:10.1016/j.carbon.2005.02.018
38. Dresselhaus MS, Dresselhaus G (1982) Light scattering in graphite intercalation compounds (Chapter 2). In: Cardona M, Güntherodt G (eds) *Light scattering in solids III : recent results*. Springer-Verlag, Berlin, pp 3–57
39. Sze SK, Siddique N, Sloan JJ, Escrignano R (2001) Raman spectroscopic characterization of carbonaceous aerosols. *Atmos Environ* 35(3):561–568
40. Wang Y, Alsmeyer DC, McCreery RL (1990) Raman spectroscopy of carbon materials: structural basis of observed spectra. *Chem Mater* 2(5):557–563
41. Ivleva NP, McKeon U, Niessner R, Pöschl U (2007) Raman microspectroscopic analysis of size-resolved atmospheric aerosol particle samples collected with an ELPI: soot, humic-like substances, and inorganic compounds. *Aerosol Sci Technol* 41(7):655–671
42. Mertes S, Dippel B, Schwarzenböck A (2004) Quantification of graphitic carbon in atmospheric aerosol particles by raman spectroscopy and first application for the determination of mass absorption efficiencies. *J Aerosol Sci* 35(3):347–361
43. Rosen H, Hansen ADA, Gundel LA, Novakov T (1978) Identification of the optically absorbing component in urban aerosols. *Appl Opt* 17(24):3859–3861
44. Keller S, Heintzenberg J (1997) Quantification of graphitic carbon on polycarbonate filters by raman spectroscopy. *J Aerosol Sci* 28(SUPP (1)):S609–S610
45. Petzold A, Schloesser H, Sheridan PJ, Arnott WP, Ogren JA, Virkkula A (2005) Evaluation of multiangle absorption photometry for measuring aerosol light absorption. *Aerosol Sci Technol* 39(1):40–51
46. Moosmüller H, Chakrabarty RK, Arnott WP (2009) Aerosol light absorption and its measurement: a review. *J Quant Spectrosc Radiat Transf* 110(11):844–878
47. Grosjean D (1975) Solvent extraction and organic carbon determination in atmospheric particulate matter: the organic extraction-organic carbon analyzer (OE-OCA) Technique. *Anal Chem* 47(6):797–805
48. El-Zanan HS, Zielinska B, Mazzoleni LR, Hansen DA (2009) Analytical determination of the aerosol organic mass-to-organic carbon ratio. *J Air Waste Manag Assoc* 59(1):58–69
49. Kirchstetter TW, Novakov T, Hobbs PV (2004) Evidence that the spectral dependence of light absorption by aerosols is affected by organic carbon. *J Geophys Res* 109 (D21208):DOI:10.1029/2004JD004999
50. Appel BR, Colodny P, Weselowski JJ (1976) Analysis of carbonaceous material in southern California atmospheric aerosols. *Environ Sci Technol* 10(4):359–363
51. Bond TC, Habib G, Bergstrom RW (2006) Limitations in the enhancement of visible light absorption due to mixing state. *J Geophys Res* 111 (D20211):doi:10.1029/2006JD007315

52. Jacobson MZ (2001) Strong radiative heating due to the mixing state of black carbon in atmospheric aerosols. *Nature* 409(6821):695–697
53. Lack DA, Cappa CD, Cross ES, Massoli P, Ahern AT, Davidovits P, Onasch TB (2009) Absorption enhancement of coated absorbing aerosols: validation of the photo-acoustic technique for measuring the enhancement. *Aerosol Sci Technol* 43(10):1006–1012
54. Schnaiter M, Linke C, Möhler O, Naumann K-H, Saathoff H, Wagner R, Schurath U, Wehner B (2005) Absorption amplification of black carbon internally mixed with secondary organic aerosol. *J Geophys Res* 110 (D19204):doi:10.1029/2005JD006046
55. Zhang RY, Khalizov AF, Pagels J, Zhang D, Xue HX, McMurry PH (2008) Variability in morphology, hygroscopicity, and optical properties of soot aerosols during atmospheric processing. *Proc Natl Acad Sci U S A* 105(30):10291–10296
56. Cappa CD, Onasch TB, Massoli P, Worsnop DR, Bates TS, Cross ES, Davidovits P, Hakala J, Hayden KL, Jobson BT, Kolesar KR, Lack DA, Lerner BM, Li S-M, Mellon D, Nuaaman I, Olfert JS, Petäjä T, Quinn PK, Song C, Subramanian R, Williams EJ, Zaveri RA (2012) Radiative absorption enhancements due to the mixing state of atmospheric black carbon. *Science* 337(6098):1078–1081. doi:10.1126/science.1223447
57. Knox A, Evans GJ, Brook JR, Yao X, Jeong CH, Godri KJ, Sabaliauskas K, Slowik JG (2009) Mass absorption cross-section of ambient black carbon aerosol in relation to chemical age. *Aerosol Sci Technol* 43(6):522–532
58. Lack DA, Corbett JJ (2012) Black carbon from ships: a review of the effects of ship speed, fuel quality and exhaust gas scrubbing. *Atmos Chem Phys* 12(9):3985–4000. doi:10.5194/acp-12-3985-2012
59. Clarke AD, Shinzuka Y, Kapustin VN, Howell S, Huebert B, Doherty S, Anderson T, Covert D, Anderson J, Hua X, Moore II KG, McNaughton C, Carmichael G, Weber R (2004) Size distributions and mixtures of dust and black carbon aerosol in asian outflow: physiochemistry and optical properties. *J Geophys Res* 109 (D15S09):DOI:10.1029/2003JD004378
60. Russell PB, Bergstrom RW, Shinzuka Y, Clarke AD, DeCarlo PF, Jimenez JL, Livingston JM, Redemann J, Dubovik O, Strawa A (2010) Absorption angstrom exponent in AERONET and related data as an indicator of aerosol composition. *Atmos Chem Phys* 10(3):1155–1169
61. Gyawali M, Amott WP, Lewis K, Moosmüller H (2009) In situ aerosol optics in Reno, NV, USA during and after the Summer 2008 California wildfires and the influence of absorbing and non-absorbing organic coatings on spectral light absorption. *Atmos Chem Phys* 9:8007–8015
62. Lack DA, Langridge JM (2013) On the attribution of light absorption to black and brown carbon using the absorption Ångström exponent. *Atmos Chem Phys Discuss* 13:15493–15515. doi:10.5194/acpd-13-15493-2013
63. Lack DA, Langridge JM, Bahreini R, Cappa CD, Middlebrook AM, Schwarz JP (2012) Brown carbon and internal mixing in biomass burning particles. *Proc Natl Acad Sci*. doi:10.1073/pnas.1206575109
64. Kondo Y, Sahu L, Kuwata M, Miyazaki Y, Takegawa N, Moteki N, Imaru J, Han S, Nakayama T, Oanh NTK, Hu M, Kim YJ, Kita K (2009) Stabilization of the mass absorption cross section of black carbon for filter-based absorption photometry by the use of a heated inlet. *Aerosol Sci Technol* 43(8):741–756
65. Bond TC, Anderson TL, Campbell D (1999) Calibration and inter-comparison of filter-based measurements of visible light absorption by aerosols. *Aerosol Sci Technol* 30(6):582–600
66. Collaud Coen M, Weingartner E, Apituley A, Ceburnis D, Fierz-Schmidhauser R, Flentje H, Henzing JS, Jennings SG, Moerman M, Petzold A, Schmid O, Baltensperger U (2010) Minimizing light absorption measurement artifacts of the aethalometer: evaluation of five correction algorithms. *Atmos Meas Tech* 3(2):457–474. doi:10.5194/amt-3-457-2010
67. Hansen ADA, Rosen H, Novakov T (1984) The aethalometer—an instrument for the real-time measurement of optical absorption by aerosol particles. *Sci Total Environ* 36:191–196
68. Lin CI, Baker MB, Charlson RJ (1973) Absorption coefficient of atmospheric aerosols: a method for measurement. *Appl Opt* 12(6):1356–1363
69. Petzold A, Schönlinner M (2004) Multi-angle absorption photometry—a new method for the measurement of aerosol light absorption and atmospheric black carbon. *J Aerosol Sci* 35(4):421–441
70. Virkkula A, Ahlquist NC, Covert DS, Amott WP, Sheridan PJ, Quinn PK, Coffman DJ (2005) Modification, calibration, and a field test of an instrument for measuring light absorption by particles. *Aerosol Sci Technol* 39(1):68–83
71. Weingartner E, Saathoff H, Schnaiter M, Streit N, Bitnar B, Baltensperger U (2003) Absorption of light by soot particles: determination of the absorption coefficient by means of aethalometers. *J Aerosol Sci* 34(10):1445–1463
72. Lindberg JD, Douglass RE, Garvey DM (1999) Atmospheric particulate absorption and black carbon measurement. *Appl Opt* 38(12):2369–2376
73. Lioussé C, Cachier H, Jennings SG (1993) Optical and thermal measurements of black carbon aerosol content in different environments: variation of the specific attenuation cross-section, Sigma (σ). *Atmos Environ* 27A(8):1203–1211
74. Ballach J, Hitzemberger R, Schultz E, Jaeschke W (2001) Development of an improved optical transmission technique for black carbon (BC) analysis. *Atmos Environ* 35(12):2089–2100
75. Bodhaine BA (1995) Aerosol absorption measurements at Barrow, Mauna Loa, and the South Pole. *J Geophys Res* 100(D5):8967–8975
76. LaRosa LE, Buckley TJ, Wallace LA (2002) Real-time indoor and outdoor measurements of black carbon in an occupied house: an examination of sources. *J Air Waste Manag Assoc* 52(1):41–49
77. Lindberg JD, Douglass RE, Garvey DM (1993) Carbon and the optical properties of atmospheric dust. *Appl Opt* 32(30):6077–6081
78. Petzold A, Kopp C, Niessner R (1997) The dependence of the specific attenuation cross-section on black carbon mass fraction and particle size. *Atmos Environ* 31(5):661–672
79. Saathoff H, Naumann K-H, Schnaiter M, Schöck W, Weingartner E, Baltensperger U, Krämer L, Bozoki Z, Pöschl U, Niessner R, Schurath U (2003) Carbon mass determinations during the AIDA soot aerosol campaign 1999. *J Aerosol Sci* 34(10):1399–1420
80. Cappa C, Lack D, Burkholder J, Ravishankara AR (2008) Bias in filter-based aerosol light absorption measurements due to organic aerosol loading: evidence from laboratory measurements. *Aerosol Sci Technol* 42(12):1022–1032
81. Lack D, Cappa C, Covert D, Baynard T, Massoli P, Sierau B, Bates T, Quinn P, Lovejoy E, Ravishankara AR (2008) Bias in filter-based aerosol light absorption measurements due to organic aerosol loading: evidence from ambient measurements. *Aerosol Sci Technol* 42(12):1033–1041
82. Subramanian R, Roden CA, Boparai P, Bond TC (2007) Yellow beads and missing particles: trouble ahead for filter-based absorption measurements. *Aerosol Sci Technol* 41(6):630–637
83. Schmid O, Artaxo P, Amott WP, Chand D, Gatti LV, Frank GP, Hoffer A, Schnaiter M, Andreae MO (2006) Spectral light absorption by ambient aerosols influenced by biomass burning in the amazon basin. I: comparison and field calibration of absorption measurement techniques. *Atmos Chem Phys* 6:3443–3462
84. Clarke AD (1982) Integrating sandwich: a new method of measurement of the light absorption coefficient for atmospheric particles. *Appl Opt* 21(16):3011–3020
85. Clarke AD, Noone KJ, Heintzenberg J, Warren SG, Covert DS (1987) Aerosol light absorption measurement techniques: analysis and intercomparison. *Atmos Environ* 21(6):1455–1465
86. Heintzenberg J, Charlson RJ, Clarke AD, Lioussé C, Ramaswamy V, Shine KP, Wendisch M, Helas G (1997) Measurements and

- modelling of aerosol single-scattering albedo: progress, problems, and prospects. *Beiträge zur Physik der Atmosphäre* 70(4):249–263
87. Horvath H (1997) Experimental Calibration for aerosol light absorption measurements using the integrating plate method—summary of the data. *J Aerosol Sci* 28(7):1149–1161
 88. Reid JS, Hobbs PV, Lioussé C, Martins JV, Weiss RE, Eck TF (1998) Comparisons of techniques for measuring shortwave absorption and black carbon content of aerosols from biomass burning in Brazil. *J Geophys Res* 103(D24):32031–32040
 89. Miyazaki Y, Kondo Y, Sahu LK, Imaru J, Fukushima N, Kano M (2008) Performance of a newly designed continuous soot monitoring system (COSMOS). *J Environ Monit* 10(10):1195–1201. doi:10.1039/b806957c
 90. Krecel P, Ström J, Johansson C (2007) Carbon content of atmospheric aerosols in a residential area during the wood combustion season in Sweden. *Atmos Environ* 41(33):6974–6985. doi:10.1016/j.atmosenv.2007.06.025
 91. Müller T, Schladitz A, Massling A, Kaaden N, Kandler K, Wiedensohler A (2009) Spectral absorption coefficients and imaginary parts of refractive indices of saharan dust during SAMUM-1. *Tellus* 61B(1):79–95
 92. Arnott WP, Hamasha K, Moosmüller H, Sheridan PJ, Ogren JA (2005) Towards aerosol light-absorption measurements with a 7-wavelength aethalometer: evaluation with a photoacoustic instrument and 3-wavelength nephelometer. *Aerosol Sci Technol* 39(1):17–29
 93. Ogren JA (2010) Comment on "Calibration and Intercomparison of Filter-Based Measurements of Visible Light Absorption by Aerosols". *Aerosol Sci Technol* 44(8):589–591
 94. Virkkula A (2010) Correction of the calibration of the 3-wavelength particle soot absorption photometer (3 PSAP). *Aerosol Sci Technol* 44(8):706–712
 95. Schwarz JP, Gao RS, Fahey DW, Thomson DS, Watts LA, Wilson JC, Reeves JM, Darbeheshti M, Baumgardner DG, Kok GL, Chung SH, Schulz M, Hendricks J, Lauer A, Kärcher B, Slowik JG, Rosenlof KH, Thompson TL, Langford AO, Loewenstein M, Aikin KC (2006) Single-particle measurements of midlatitude black carbon and light-scattering aerosols from the boundary layer to the lower stratosphere. *J Geophys Res* 111 (D16207):doi:10.1029/2006JD007076
 96. Lack DA, Lovejoy ER, Baynard T, Pettersson A, Ravishankara AR (2006) Aerosol absorption measurement using photoacoustic spectroscopy: sensitivity, calibration, and uncertainty developments. *Aerosol Sci Technol* 40(9):697–708
 97. Sheridan PJ, Arnott WP, Ogren JA, Andrews E, Atkinson DB, Covert DS, Moosmüller H, Petzold A, Schmidt B, Strawa AW, Varna R, Virkkula A (2005) The Reno aerosol optics study: an evaluation of aerosol absorption measurement methods. *Aerosol Sci Technol* 39(1):1–16
 98. Lack DA, Corbett JJ, Onasch T, Lerner B, Massoli P, Quinn PK, Bates TS, Covert DS, Coffinan D, Sierau B, Herndon S, Allan J, Baynard T, Lovejoy E, Ravishankara AR, Williams E (2009) Particulate emissions from commercial shipping: chemical, physical, and optical properties. *J Geophys Res* 114 (D00F04):doi:10.1029/2008JD011300
 99. Park K, Chow JC, Watson JG, Trimble DL, Doraiswamy P, Park K, Arnott WP, Stroud KR, Bowers K, Bode R, Petzold A, Hansen ADA (2006) Comparison of continuous and filter-based carbon measurements at the Fresno supersite. *J Air Waste Manag Assoc* 56(4):474–491
 100. Rice J (2004) Comparison of integrated filter and automated carbon aerosol measurements at Research Triangle Park, North Carolina. *Aerosol Sci Technol* 38(S2):23–36
 101. Schnaiter M, Schmid O, Petzold A, Fritzsche L, Klein KF, Andreae MO, Helas G, Thielmann A, Gimmler M, Möhler O, Linke C, Schurath U (2005) Measurement of wavelength-resolved light absorption by aerosols utilizing a UV-VIS extinction cell. *Aerosol Sci Technol* 39(3):249–260
 102. Slowik JG, Cross ES, Han J-H, Davidovits P, Onasch TB, Jayne JT, Williams LR, Canagaratna MR, Worsnop DR, Chakrabarty RK, Moosmüller H, Arnott WP, Schwarz JP, Gao R-S, Fahey DW, Kok GL, Petzold A (2007) An inter-comparison of instruments measuring black carbon content of soot particles. *Aerosol Sci Technol* 41(3):295–314
 103. Wallace L (2005) Real-time measurements of black carbon indoors and outdoors: a comparison of the photoelectric aerosol sensor and the aethalometer. *Aerosol Sci Technol* 39(10):1015–1025. doi:10.1080/02786820500365363
 104. Northrop WF, Bohac SV, Chin J-Y, Assanis DN (2011) Comparison of filter smoke number and elemental carbon mass from partially premixed low temperature combustion in a direct-injection diesel engine. *J Eng Gas Turbines Power* 133(10):102804–102806. doi:10.1115/1.4002918
 105. Tam AC (1986) Applications of photoacoustic sensing techniques. *Rev Mod Phys* 58(2):381–431
 106. Arnott WP, Moosmüller H, Walker JW (2000) Nitrogen dioxide and kerosene-flame soot calibration of photoacoustic instruments for measurement of light absorption by aerosols. *Rev Sci Instrum* 71(7):4545–4552
 107. Tian G, Moosmüller H, Arnott WP (2009) Simultaneous photoacoustic spectroscopy of aerosol and oxygen A-band absorption for the calibration of aerosol light absorption measurements. *Aerosol Sci Technol* 43(11):1084–1090
 108. Gillis KA, Havey DK, Hodges JT (2010) Standard photoacoustic spectrometer: model and validation using O₂ A-band spectra. *Rev Sci Instrum* 81(6):064902
 109. Abu-Rahmah A, Arnott WP, Moosmüller H (2006) Integrating nephelometer with a low truncation angle and an extended calibration scheme. *Meas Sci Technol* 17(7):1723–1732
 110. Arnott WP, Zielinska B, Rogers CF, Sagebiel J, Park K, Chow J, Moosmüller H, Watson JG, Kelly K, Wagner D, Sarofim A, Lighty J, Palmer G (2005) Evaluation of 1047-nm photoacoustic instruments and photoelectric aerosol sensors in source-sampling of black carbon aerosol and particle-bound PAHs from gasoline- and diesel-powered vehicles. *Environ Sci Technol* 39(14):5398–5406
 111. Adams KM, Davis LI Jr, Japar SM, Finley DR, Cary RA (1990) Measurement of atmospheric elemental carbon: real-time data for Los Angeles during summer 1987. *Atmos Environ* 24A(3):597–604
 112. Tian G, Moosmüller H, Arnott WP (2013) Influence of photolysis on multispectral photoacoustic measurement of nitrogen dioxide concentration. *J Air Waste Manag Assoc* 63(9):1091–1097
 113. Arnott WP, Moosmüller H, Sheridan PJ, Ogren JA, Raspet R, Slaton WV, Hand JL, Kreidenweis SM, Collett JL Jr (2003) Photoacoustic and filter-based ambient aerosol light absorption measurements: instrument comparison and the role of relative humidity. *J Geophys Res* 108(D1):4034–4044. doi:10.1029/2002JD002165
 114. Raspet R, Slaton WV, Arnott WP, Moosmüller H (2003) Evaporation–condensation effects on resonant photoacoustics of volatile aerosols. *J Atmos Ocean Technol* 20(5):685–695
 115. Langridge JM, Richardson MS, Lack D, Law D, Murphy DM (2011) Aircraft instrument for comprehensive characterization of aerosol optical properties, part I: Wavelength-dependent optical extinction and its relative humidity dependence measured using cavity ringdown spectroscopy. *Aerosol Sci Technol* 45(11):1305–1318. doi:10.1080/02786826.2011.592745
 116. Murphy DM (2009) The effect of water evaporation on photoacoustic signals in transition and molecular flow. *Aerosol Sci Technol* 43(4):356–363
 117. Chan CH (1975) Effective absorption for thermal blooming due to aerosols. *Appl Phys Lett* 26(11):628–630
 118. Arnott WP, Moosmüller H, Rogers CF, Jin T, Bruch R (1999) Photoacoustic spectrometer for measuring light absorption by aerosol: instrument description. *Atmos Environ* 33(17):2845–2852

119. Adams KM, Davis LI Jr, Japar SM, Finley DR (1990) Real-time, in situ measurement of atmospheric optical absorption in the visible via photoacoustic spectroscopy-IV. Visibility degradation and aerosol optical properties in Los Angeles. *Atmos Environ* 24A(3):605–610
120. Petzold A, Niessner R (1995) Novel design of a resonant photoacoustic spectrophone for elemental carbon mass monitoring. *Appl Phys Lett* 66(10):1285–1287
121. Petzold A, Niessner R (1996) Photoacoustic soot sensor for in-situ black carbon monitoring. *Appl Phys B* 63(2):191–197
122. Gerlach R, Amer NM (1980) Brewster window and windowless resonant spectrophones for intracavity operation. *Appl Phys* 23(3):319–326
123. Adams KM (1988) Real-time in situ measurements of atmospheric optical absorption in the visible via photoacoustic spectroscopy. I: evaluation of photoacoustic cells. *Appl Opt* 27(19):4052–4056
124. Lewis K, Arnott WP, Moosmüller H, Wold CE (2008) Strong spectral variation of biomass smoke light absorption and single scattering albedo observed with a novel dual-wavelength photoacoustic instrument. *J Geophys Res* 113 (D16203):doi:10.1029/2007JD009699
125. Sharma N, Arnott IJ, Moosmüller H, Arnott WP, Mazzoleni C (2013) Photoacoustic and nephelometric spectroscopy of aerosol optical properties with a supercontinuum light source. *Atmos Meas Tech Discuss* 6:6293–6327
126. Ajtai T, Filep Á, Schnaiter M, Linke C, Vragel M, Bozóki Z, Szabó G, Leisner T (2010) A novel multi-wavelength photoacoustic spectrometer for the measurement of the UV-Vis-NIR spectral absorption coefficient of atmospheric aerosols. *J Aerosol Sci* 41(11):1020–1029. doi:10.1016/j.jaerosci.2010.07.008
127. Haisch C, Menzenbach P, Blatt H, Niessner R (2012) A wide spectral range photoacoustic aerosol absorption spectrometer. *Anal Chem* 84:8941–8945. doi:10.1021/ac302194u
128. Lack DA, Richardson MS, Law D, Langridge JM, Cappa CD, McLaughlin RJ, Murphy DM (2012) Aircraft instrument for comprehensive characterization of aerosol optical properties, Part 2: black and brown carbon absorption and absorption enhancement measured with photo acoustic spectroscopy. *Aerosol Sci Technol* 46(5):555–568
129. Chakrabarty RK, Moosmüller H, Chen L-WA, Lewis K, Arnott WP, Mazzoleni C, Dubey MK, Wold CE, Hao WM, Kreidenweis SM (2010) Brown carbon in tar balls from smoldering biomass combustion. *Atmos Chem Phys* 10:6363–6370
130. Lack DA, Bahreini R, Langridge JM, Gilman JB, Middlebrook AM (2013) Brown carbon absorption linked to organic mass tracers in biomass burning particles. *Atmos Chem Phys* 13(5):2415–2422. doi:10.5194/Acp-13-2415-2013
131. Chakrabarty RK, Arnold IJ, Francisco DM, Hatchet B, Hosseinpour F, Loria M, Pokharel A, Woody BM (2013) Black and brown carbon fractal aggregates from combustion of two fuels widely used in Asian rituals. *J Quant Spectrosc Radiat Transf* 122:25–30
132. Flowers BA, Dubey MK, Mazzoleni C, Stone EA, Schauer JJ, Kim S-W, Yoon SC (2010) Optical-chemical-microphysical relationships and closure studies for mixed carbonaceous aerosols observed at Jeju Island; 3-laser photoacoustic spectrometer, particle sizing, and filter analysis. *Atmos Chem Phys* 10(21):10387–10398
133. Moosmüller H, Engelbrecht JP, Skiba M, Frey G, Chakrabarty RK, Arnott WP (2012) Single scattering albedo of fine mineral dust aerosols controlled by iron concentration. *J Geophys Res* 117 (D11210):doi:10.1029/2011JD016909
134. Lack DA, Cappa CD (2010) Impact of brown and clear carbon on light absorption enhancement, single scatter albedo and absorption wavelength dependence of black carbon. *Atmos Chem Phys* 10(9):4207–4220
135. Chakrabarty RK, Moosmüller H, Arnott WP, Garro MA, Slowik JG, Cross ES, Han J-H, Davidovits P, Onasch TB, Worsnop DR (2007) Light scattering and absorption by fractal-like carbonaceous chain aggregates: comparison of theories and experiment. *Appl Opt* 46(28):6990–7006
136. Lewis K, Arnott WP, Moosmüller H, Chakrabarty RK, Carrico CM, Kreidenweis SM, Day DE, Malm WC, Laskin A, Jimenez JL, Ulbrich IM, Huffman JA, Onasch TB, Trimborn A, Lui L, Mishchenko MI (2009) Reduction in biomass burning aerosol light absorption upon humidification: roles of inorganically-induced hygroscopicity, particle collapse, and photoacoustic heat and mass transfer. *Atmos Chem Phys* 9:8949–8966
137. Bialkowski SE (1996) Photothermal spectroscopy methods for chemical analysis. In: Winefordner JD (ed) *Chemical analysis: a series of monographs on analytical chemistry and its application*, vol 134. John Wiley and Sons, New York
138. Davis CC (1980) Trace detection in gases using phase fluctuation optical heterodyne spectroscopy. *Appl Phys Lett* 36(7):515–518
139. Davis CC, Petuchowski SJ (1981) Phase fluctuation optical heterodyne spectroscopy of gases. *Appl Opt* 20(14):2539–2554
140. Davis CC, Petuchowski SJ (1981) Phase fluctuation optical heterodyne spectroscopy of gases: errata. *Appl Opt* 20(24):4151
141. Lin H-B, Campillo AJ (1985) Photothermal aerosol absorption spectroscopy. *Appl Opt* 24(3):422–433
142. Fluckiger DU, Lin H-B, Marlow WH (1985) Composition measurement of aerosols of submicrometer particles by phase fluctuation absorption spectroscopy. *Appl Opt* 24(11):1668–1681
143. Sedlacek AJ (2006) Real-time detection of ambient aerosols using photothermal interferometry: folded Jamin interferometer. *Rev Sci Instrum* 77(6):064903
144. Moosmüller H, Arnott WP, Rogers CF (1997) Methods for real time, in situ measurement of aerosol light absorption. *J Air Waste Manag Assoc* 47:157–166
145. Sedlacek A, Lee J (2007) Photothermal interferometric aerosol absorption spectrometry. *Aerosol Sci Technol* 41(12):1089–1101
146. Moosmüller H, Arnott WP (1996) Folded Jamin interferometer: a stable instrument for refractive-index measurements. *Opt Lett* 21(6):438–440
147. Owens MA, Davis CC, Dickerson RR (1999) A photothermal interferometer for gas-phase ammonia detection. *Anal Chem* 71(7):1391–1399. doi:10.1021/ac980810h
148. Dovichi NJ (1990) Laser-based microchemical analysis. *Rev Sci Instrum* 61(12):3653–3668
149. Cross ES, Onasch TB, Ahern A, Wrobel W, Slowik JG, Olfert J, Lack DA, Massoli P, Cappa CD, Schwarz JP, Spackman JR, Fahey DW, Sedlacek A, Trimborn A, Jayne JT, Freedman A, Williams LR, Ng NL, Mazzoleni C, Dubey M, Brem B, Kok G, Subramanian R, Freitag S, Clarke A, Thornhill D, Marr LC, Kolb CE, Worsnop DR, Davidovits P (2010) Soot particle studies—instrument inter-comparison—project overview. *Aerosol Sci Technol* 44(8):592–611
150. Abou-Zeid A, Wiese P (1998) Interferometer with a wavelength-tuned diode laser for surface profilometry. *Meas Sci Technol* 9(7):1105–1110
151. Downs MJ (1990) A proposed design for an optical interferometer with sub-nanometric resolution. *Nanotechnology* 1(1):27
152. Ishii Y, Chen J, Murata K (1987) Digital phase-measuring interferometry with a tunable laser diode. *Opt Lett* 12(4):233–235
153. Stone JA, Stejskal A, Howard L (1999) Absolute interferometry with a 670-nm external cavity diode laser. *Appl Opt* 38(28):5981–5994
154. Giles DM, Holben BN, Eck TF, Sinyuk A, Smirnov A, Slutsker I, Dickerson RR, Thompson AM, Schafer JS (2012) An analysis of AERONET aerosol absorption properties and classifications representative of aerosol source regions. *J Geophys Res* 117 (D17203):doi:10.1029/2012JD018127
155. Measures RM (1984) *Laser remote sensing: fundamentals and applications*. John Wiley & Sons, Inc., New York
156. Shaw GE (1983) Sun photometry. *Bull Am Meteorol Soc* 64(1):4–10

157. Alvarez RJ II, Caldwell LM, Wolyn PG, Krueger DA, McKee TB, She CY (1993) Profiling temperature, pressure, and aerosol properties using a high spectral resolution lidar employing atomic blocking filters. *J Atmos Ocean Technol* 10(4):546–556
158. Piironen P, Eloranta EW (1994) Demonstration of a high-spectral-resolution lidar based on an iodine absorption filter. *Opt Lett* 19(3):234–236
159. Esselborn M, Wirth M, Fix A, Tesche M, Ehret G (2008) Airborne high spectral resolution lidar for measuring aerosol extinction and backscatter coefficients. *Appl Opt* 47(3):346–358
160. Hair JW, Caldwell LM, Krueger DA, She C-Y (2001) High-spectral-resolution lidar with iodine-vapor filters: measurement of atmospheric-state and aerosol profiles. *Appl Opt* 40(30):5280–5294
161. Hair JW, Hostetler CA, Cook AL, Harper DB, Ferrare RA, Mack TL, Welch W, Izquierdo LR, Hovis FE (2008) Airborne high spectral resolution lidar for profiling aerosol optical properties. *Appl Opt* 47(36):6734–6752
162. Whiteman DN (2003) Examination of the traditional raman lidar technique. II. Evaluating the ratios for water vapor and aerosols. *Appl Opt* 42(15):2593–2608
163. Goldsmith JE, Blair FH, Bisson SE, Turner DD (1998) Turnkey Raman lidar for profiling atmospheric water vapor, clouds, and aerosols. *Appl Opt* 37(21):4979–4990
164. Moosmüller H, Wilkerson TD (1997) Combined Raman-elastic backscatter lidar method for the measurement of backscatter ratios. *Appl Opt* 36(21):5144–5147
165. Perrone MR, Barnaba F, Tomasi FD, Gobbi GP, Tafuro AM (2004) Imaginary refractive-index effects on desert-aerosol extinction versus backscatter relationships at 351 nm: numerical computations and comparison with Raman lidar measurements. *Appl Opt* 43(29):5531–5541
166. Müller D, Wandinger U, Althausen D, Fiebig M (2001) Comprehensive particle characterization from three-wavelength Raman-lidar observations: case study. *Appl Opt* 40(27):4863–4869
167. Reagan JA, Byrne DM, King MD, Spinhirne JD, Herman BM (1980) Determination of the complex refractive-index and size distribution of atmospheric particulates from bistatic-monostatic lidar and solar radiometer measurements. *J Geophys Res* 85(C3):1591–1599
168. Herman B, Browning R, De Luisi J (1975) Determination of the effective imaginary term of the complex refractive index of atmospheric dust by remote sensing: the diffuse-direct radiation method. *J Atmos Sci* 32(5):918–925
169. Holben BN, Eck TF, Slutsker I, Tanré D, Buis JP, Setzer A, Vermote E, Reagan JA, Kaufman YJ, Nakajima T, Lavenu F, Jankowiak I, Smirnov A (1998) AERONET—a federated instrument network and data archive for aerosol characterization. *Remote Sens Environ* 66(1):1–16
170. Harrison L, Michalsky J, Berndt J (1994) Automated multifilter rotating shadow-band radiometer: an instrument for optical depth and radiation measurements. *Appl Opt* 33(22):5118–5125
171. Stokes GM, Schwartz SE (1994) The atmospheric radiation measurement (ARM) program: programmatic background and design of the cloud and radiation test bed. *Bull Am Meteorol Soc* 75(7):1201–1221
172. Alexandrov MD, Laci AA, Carlson BE, Cairns B (2002) Remote sensing of atmospheric aerosols and trace gases by means of multifilter rotating shadowband radiometer. Part I: retrieval algorithm. *J Atmos Sci* 59(3):524–543
173. Taylor TE, L'Ecuyer TS, Slusser JR, Stephens GL, Goering CD (2008) An operational retrieval algorithm for determining aerosol optical properties in the ultraviolet. *J Geophys Res* 113 (D03201):doi:10.1029/2007JD008661
174. Dubovik O, King MD (2000) A flexible inversion algorithm for retrieval of aerosol optical properties from sun and sky radiance measurements. *J Geophys Res* 105(D16):20673–20696
175. Dubovik O, Sinyuk A, Lapyonok T, Holben BN, Mishchenko M, Yang P, Eck TF, Volten H, Munoz O, Veihelmann B, van der Zande WJ, Leon JF, Sorokin M, Slutsker I (2006) Application of spheroid models to account for aerosol particle nonsphericity in remote sensing of desert dust. *J Geophys Res* 111 (D11208):doi:10.1029/2005JD006619
176. Derimian Y, Karnieli A, Kaufman YJ, Andreae MO, Andreae TW, Dubovik O, Maenhaut W, Koren I (2008) The role of iron and black carbon in aerosol light absorption. *Atmos Chem Phys* 8(13):3623–3637
177. Sato M, Hansen J, Koch D, Laci A, Ruedy R, Dubovik O, Holben B, Chin M, Novakov T (2003) Global atmospheric black carbon inferred from AERONET. *Proc Natl Acad Sci U S A* 100(11):6319–6324
178. Eck TF, Holben BN, Reid JS, O'Neill NT, Schafer JS, Dubovik O, Smirnov A, Yamasoe MA, Artaxo P (2003) High aerosol optical depth biomass burning events: a comparison of optical properties for different source regions. *Geophys Res Lett* 30 (20):DOI:10.1029/2003GLO17861
179. Kaufman YJ, Tanre D, Gordon HR, Nakajima T, Lenoble J, Frouin R, Grassl H, Herman BM, King MD, Teillet PM (1997) Passive remote sensing of tropospheric aerosol and atmospheric correction for the aerosol effect. *J Geophys Res* 102(D14):16815–16830
180. Fraser RS, Kaufman YJ (1985) The relative importance of aerosol scattering and absorption in remote sensing. *IEEE Trans Geosci Remote Sens* GE-23(5):625–633
181. Kaufman YJ (1987) Satellite sensing of aerosol absorption. *J Geophys Res* 92(D4):4307–4317
182. Kaufman YJ, Martins JV, Remer LA, Schoeberl MR, Yamasoe MA (2002) Satellite retrieval of aerosol absorption over the oceans using sunglint. *Geophys Res Lett* 29 (19):doi:10.1029/2002GL015403
183. Herman JR, Bhartia PK, Torres O, Hsu C, Seftor C, Celarier E (1997) Global distribution of UV-absorbing aerosols from Nimbus 7/TOMS data. *J Geophys Res* 102(D14):16911–16922
184. Hsu NC, Herman JR, Gleason JF, Torres O, Seftor CJ (1999) Satellite detection of smoke aerosols over a snow/ice surface by TOMS. *Geophys Res Lett* 26(8):1165–1168
185. Remer LA, Kaufman YJ, Tanré D, Mattoo S, Chu DA, Martins JV, Li R-R, Ichoku C, Levy RC, Kleidman RG, Eck TF, Vermote E, Holben BN (2005) The MODIS aerosol algorithm, products, and validation. *J Atmos Sci* 62(4):947–973
186. Torres O, Bhartia PK, Herman JR, Ahmad Z, Gleason J (1998) Derivation of aerosol properties from satellite measurements of backscattered ultraviolet radiation: theoretical basis. *J Geophys Res* 103(D14):17099–17110
187. Hu RM, Martin RV, Fairlie TD (2007) Global retrieval of columnar aerosol single scattering albedo from space-based observations. *J Geophys Res* 112 (D02204):doi:10.1029/2005JD006832
188. Jeong M-J, Hsu C (2008) Retrievals of aerosol single-scattering albedo and effective aerosol layer height for biomass-burning smoke: synergy derived from “A-Train” sensors. *Geophys Res Lett* 35 (L24801):doi:10.1029/2008GL036279
189. Zhu L, Martins JV, Remer LA (2011) Biomass burning aerosol absorption measurements with MODIS using the critical reflectance method. *J Geophys Res* 116 (D07202):doi:10.1029/2010JD015187
190. Kalashnikova OV, Kahn R, Sokolik IN, Li WH (2005) Ability of multiangle remote sensing observations to identify and distinguish mineral dust types: optical models and retrievals of optically thick plumes. *J Geophys Res* 110 (D18S14):doi:10.1029/2004JD004550
191. Kalashnikova OV, Kahn R (2006) Ability of multiangle remote sensing observations to identify and distinguish mineral dust types: 2. Sensitivity over dark water. *J Geophys Res* 111 (D11207):doi:10.1029/2005JD006756
192. Kalashnikova OV, Kahn R (2008) Mineral dust plume evolution over the atlantic from MISR and MODIS aerosol retrievals. *J Geophys Res* 113 (D24204):doi:10.1029/2008JD010083
193. Kahn RA, Gaitley BJ, Garay MJ, Diner DJ, Eck TF, Smirnov A, Holben BN (2010) Multiangle imaging spectroradiometer global

- aerosol product assessment by comparison with the aerosol robotic network. *J Geophys Res* 115 (D23209):doi:10.1029/2010JD014601
194. Mishchenko MI, Cairns B, Kopp G, Schueler CF, Fafaul BA, Hansen JE, Hooker RJ, Itchkawich T, Maring HB, Travis LD (2007) Accurate monitoring of terrestrial aerosols and total solar irradiance—introducing the Glory Mission. *Bull Am Meteorol Soc* 88(5):677–691
 195. Mishchenko MI, Cairns B, Hansen JE, Travis LD, Burg R, Kaufman YJ, Martins JV, Shettle EP (2004) Monitoring of Aerosol forcing of climate from space: analysis of measurement requirements. *J Quant Spectrosc Radiat Transf* 88(1/3):149–161
 196. Chowdhary J, Cairns B, Mishchenko MI, Hobbs PV, Cota GF, Redemann J, Rutledge K, Holben BN, Russell E (2005) Retrieval of aerosol scattering and absorption properties from photopolarimetric observations over the ocean during the CLAMS experiment. *J Atmos Sci* 62(4):1093–1117
 197. Moteki N, Kondo Y (2010) Dependence of laser-induced incandescence on physical properties of black carbon aerosols: measurements and theoretical interpretation. *Aerosol Sci Technol* 44(8):663–675
 198. Eckbreth AC (1977) Effects of laser-modulated particulate incandescence on Raman scattering diagnostics. *J Appl Phys* 48(11):4473–4479
 199. Weeks RW, Duley WW (1974) Aerosol-particle sizes from light emission during excitation by TEA CO₂ laser pulses. *J Appl Phys* 45(10):4661–4662
 200. Melton LA (1984) Soot diagnostic based on laser heating. *Appl Opt* 23(13):2201–2208
 201. Dasch CJ (1984) Continuous-wave probe laser investigation of laser vaporization of small soot particles in a flame. *Appl Opt* 23(13):2209–2215
 202. Michelsen HA, Schrader PE, Goulay F (2010) Wavelength and temperature dependences of the absorption and scattering cross sections of soot. *Carbon* 48:2175–2191
 203. Quay B, Lee T-W, Ni T, Santoro RJ (1994) Spatially resolved measurements of soot volume fraction using laser-induced incandescence. *Combust Flame* 97(3/4):384–392
 204. Shaddix CR, Smyth KC (1996) Laser-induced incandescence measurements of soot production in steady and flickering methane, propane, and ethylene diffusion flames. *Combust Flame* 107(4):418–452. doi:10.1016/S0010-2180(96)00107-1
 205. Mewes B, Seitzman JM (1997) Soot volume fraction and particle size measurements with laser-induced incandescence. *Appl Opt* 36(3):709–717
 206. Rohlfing EA, Chandler DW (1990) Two-color pyrometric imaging of laser-heated carbon particles in a supersonic flow. *Chem Phys Lett* 170(1):44–50. doi:10.1016/0009-2614(90)87087-8
 207. Snelling DR, Link O, Thomson KA, Smallwood GJ (2011) Measurement of soot morphology by integrated lli and elastic light scattering. *Appl Phys B* 104(2):385–397. doi:10.1007/S00340-011-4394-6
 208. Case ME, Hofeldt DL (1996) Soot mass concentration measurements in diesel engine exhaust using laser-induced incandescence. *Aerosol Sci Technol* 25(1):46–60
 209. McEwen JDN, Johnson MR (2012) Black carbon particulate matter emission factors for buoyancy-driven associated gas flares. *J Air Waste Manag Assoc* 62(3):307–321. doi:10.1080/10473289.2011.650040
 210. Ma L, Cao T, Thompson J (2013) Technical note: aeolian dust proxies produce visible luminescence upon intense laser-illumination that results from incandescence of internally mixed carbon. *Atmos Meas Tech Discuss* 6(3):5173–5194
 211. Chan TW, Brook JR, Smallwood GJ, Lu G (2011) Time-resolved measurements of black carbon light absorption enhancement in urban and near-urban locations of southern Ontario, Canada. *Atmos Chem Phys* 11(20):10407–10432
 212. Stephens M, Turner N, Sandberg J (2003) Particle identification by laser-induced incandescence in a solid-state laser cavity. *Appl Opt* 42(19):3726–3736
 213. Baumgardner D, Kok G, Raga G (2004) Warming of the arctic lower stratosphere by light absorbing particles. *Geophys Res Lett* 31 (6):DOI:10.1029/2003GL018883
 214. Baumgardner D, Kok G, Raga G (2007) On the diurnal variability of particle properties related to light absorbing carbon in Mexico city. *Atmos Chem Phys* 7(10):2517–2526
 215. Moteki N, Kondo Y, Miyazaki Y, Takegawa N, Komazaki Y, Kurata G, Shirai T, Blake DR, Miyakawa T, Koike M (2007) Evolution of mixing state of black carbon particles: aircraft measurements over the western Pacific in March 2004. *Geophys Res Lett* 34 (L11803): doi:10.1029/2006GL028943
 216. Shiraiwa M, Kondo Y, Moteki N, Takegawa N, Miyazaki Y, Blake DR (2007) Evolution of mixing state of black carbon in polluted air from Tokyo. *Geophys Res Lett* 34 (L16803):doi:10.1029/2007GL029819
 217. McConnell JR, Edwards R, Kok GL, Flanner MG, Zender CS, Saltzman ES, Banta JR, Pasteris DR, Carter MM, Kahl JDW (2007) Twentieth-century industrial black carbon emissions altered arctic climate forcing. *Science* 317(5843):1381–1384
 218. Bisiaux MM, Edwards R, McConnell JR, Albert MR, Anshütz H, Neumann TA, Isaksson E, Penner JE (2012) Variability of black carbon deposition to the east Antarctic plateau, 1800–2000 AD. *Atmos Chem Phys* 12(8):3799–3808. doi:10.5194/acp-12-3799-2012
 219. Kaspari SD, Schwikowski M, Gysel M, Flanner MG, Kang S, Hou S, Mayewski PA (2011) Recent increase in black carbon concentrations from a Mt. Everest ice core spanning 1860–2000 AD. *Geophys Res Lett* 38(4):L04703. doi:10.1029/2010GL046096
 220. Schwarz J, Doherty S, Li F, Ruggiero S, Tanner C, Perring A, Gao R, Fahey D (2012) Assessing single particle soot photometer and integrating sphere/integrating sandwich spectrophotometer measurement techniques for quantifying black carbon concentration in snow. *Atmos Meas Tech* 5(11):2581–2592
 221. Schwarz J, Gao R, Perring A, Spackman J, Fahey D (2013) Black carbon aerosol size in snow. *Sci Rep* 3:DOI:10.1038/srep01356
 222. Bisiaux MM, Edwards R, Heyvaert AC, Thomas JM, Fitzgerald B, Susfalk RB, Schladow SG, Thaw M (2011) Stormwater and fire as sources of black carbon nanoparticles to Lake Tahoe. *Environ Sci Technol* 45(6):2065–2071
 223. Ohata S, Moteki N, Kondo Y (2011) Evaluation of a method for measurement of the concentration and size distribution of black carbon particles suspended in rainwater. *Aerosol Sci Technol* 45(11):1326–1336
 224. Gao RS, Schwarz JP, Kelly KK, Fahey DW, Watts LA, Thompson TL, Spackman JR, Slowik JG, Cross ES, Han J-H, Davidovits P, Onasch TB, Worsnop DR (2007) A novel method for estimating light-scattering properties of soot aerosols using a modified single-particle soot photometer. *Aerosol Sci Technol* 41(2):125–135
 225. Moteki N, Kondo Y (2008) Method to measure time-dependent scattering cross sections of particles evaporating in a laser beam. *J Aerosol Sci* 39(4):348–364
 226. Sedlacek AJ, Lewis ER, Kleinman L, Xu J, Zhang Q (2012) Determination of and evidence for non-core-shell structure of particles containing black carbon using the single-particle soot photometer (SP2). *Geophys Res Lett* 39 (L06802):doi:10.1029/2012GL050905
 227. Schwarz JP, Spackman JR, Fahey DW, Gao RS, Lohmann U, Stier P, Watts LA, Thomson DS, Lack DA, Pfister L, Mahoney MJ, Baumgardner D, Wilson JC, Reeves JM (2008) Coatings and their enhancement of black carbon light absorption in the tropical atmosphere. *J Geophys Res* 113 (D03203):doi:10.1029/2007JD009042
 228. Liu DY, Allan J, Whitehead J, Young D, Flynn M, Coe H, McFiggans G, Fleming ZL, Bandy B (2013) Ambient black carbon particle hygroscopic properties controlled by mixing state and

- composition. *Atmos Chem Phys* 13:2015–2029. doi:10.5194/acp-13-2015-2013
229. McMeeking GR, Good N, Petters MD, McFiggans G, Coe H (2011) Influences on the fraction of hydrophobic and hydrophilic black carbon in the atmosphere. *Atmos Chem Phys* 11(10):5099–5112. doi:10.5194/acp-11-5099-2011
 230. Schulz C, Kock BF, Hofmann M, Michelsen H, Will S, Bougie B, Suntz R, Smallwood G (2006) Laser-induced incandescence: recent trends and current questions. *Appl Phys B* 83(3):333–354
 231. Vander Wal RL, Choi MY, Lee K-O (1995) The effects of rapid heating of soot: implications when using laser-induced incandescence for soot diagnostics. *Combust Flame* 102(1/2):200–204
 232. Moteki N, Kondo Y (2007) Effects of mixing state on black carbon measurements by laser-induced incandescence. *Aerosol Sci Technol* 41(4):398–417
 233. Gysel M, Laborde M, Olfert JS, Subramanian R, Gröhn AJ (2011) Effective density of aquadag and fullerene soot black carbon reference materials used for SP2 calibration. *Atmos Meas Tech* 4(12):2851–2858
 234. Laborde M, Mertes P, Zieger P, Dommen J, Baltensperger U, Gysel M (2012) Sensitivity of the single particle soot photometer to different black carbon types. *Atmos Meas Tech* 5(5):1031–1043
 235. Schwarz JP, Spackman JR, Gao RS, Perring AE, Cross E, Onasch TB, Ahern A, Wrobel W, Davidovits P, Olfert J, Dubey MK, Mazzoleni C, Fahey DW (2010) The detection efficiency of the single particle soot photometer. *Aerosol Sci Technol* 44(8):612–628
 236. Akagi SK, Craven JS, Taylor JW, McMeeking GR, Yokelson RJ, Burling IR, Urbanski SP, Wold CE, Seinfeld JH, Coe H, Alvarado MJ, Weise DR (2012) Evolution of trace gases and particles emitted by a chaparral fire in California. *Atmos Chem Phys* 12(3):1397–1421. doi:10.5194/acp-12-1397-2012
 237. Canagaratna MR, Jayne JT, Jimenez JL, Allan JD, Alfarra MR, Zhang Q, Onasch TB, Drewnick F, Coe H, Middlebrook A, Delia A, Williams LR, Trimborn AM, Northway MJ, DeCarlo PF, Kolb CE, Davidovits P, Worsnop DR (2007) Chemical and microphysical characterization of ambient aerosols with the aerodyne aerosol mass spectrometer. *Mass Spectrom Rev* 26(2):185–222
 238. Onasch TB, Trimborn A, Fortner EC, Jayne JT, Kok GL, Williams LR, Davidovits P, Worsnop DR (2012) Soot particle aerosol mass spectrometer: development, validation, and initial application. *Aerosol Sci Technol* 46(7):804–817
 239. Chakrabarty RK, Moosmüller H, Arnott WP, Garro MA, Walker JW (2006) Structural and fractal properties of particles emitted from spark ignition engines. *Environ Sci Technol* 40(21):6647–6654
 240. Chakrabarty RK, Moosmüller H, Garro MA, Arnott WP, Walker JW, Susott RA, Babbitt RE, Wold CE, Lincoln EN, Hao WM (2006) Emissions from the laboratory combustion of wildland fuels: particle morphology and size. *J Geophys Res* 111 (D07204):doi:10.1029/2005JD006659
 241. Wentzel M, Gorzawski H, Naumann K-H, Saathoff H, Weinbruch S (2003) Transmission electron microscopical and aerosol dynamical characterization of soot aerosols. *J Aerosol Sci* 34(10):1347–1370
 242. Pósfai M, Simonics R, Li J, Hobbs PV, Buseck PR (2003) Individual aerosol particles from biomass burning in southern Africa: 1. Compositions and size distributions of carbonaceous particles. *J Geophys Res* 108 (D13):DOI:10.1029/2002JD002291
 243. Dhaubhadel R, Pierce F, Chakrabarti A, Sorensen CM (2006) Hybrid superaggregate morphology as a result of aggregation in a cluster-dense aerosol. *Phys Rev E* 73(1):011404
 244. Jullien R, Botet R (1987) *Aggregation and fractal aggregates*. World Scientific, Singapore
 245. Jullien R, Kolb M, Botet R (1984) Diffusion limited aggregation with directed and anisotropic diffusion. *J Phys* 45(3):395–399
 246. Forrest SR, Witten TA (1979) Long-range correlations in smoke-particle aggregates. *J Phys A Math Gen* 12(5):L109–L117
 247. Sorensen (2001) Light scattering by fractal aggregates: a review. *Aerosol Sci Technol* 35(2):648–687
 248. Sorensen CM, Chakrabarti A (2011) The sol to gel transition in irreversible particulate systems. *Soft Matter* 7(6):2284–2296. doi:10.1039/C0sm00228c
 249. Heinson WR, Sorensen CM, Chakrabarti A (2010) Does shape anisotropy control the fractal dimension in diffusion-limited cluster-cluster aggregation? *Aerosol Sci Tech* 44 (12):I–Iv
 250. Sorensen CM, Cai J, Lu N (1992) Light-scattering measurements of monomer size, monomers per aggregate, and fractal dimension for soot aggregates in flames. *Appl Opt* 31(30):6547–6557
 251. Katrinak KA, Rez P, Perkes PR, Buseck PR (1993) Fractal geometry of carbonaceous aggregates from an urban aerosol. *Environ Sci Technol* 27(3):539–547
 252. Xiong C, Friedlander SK (2001) Morphologic properties of atmospheric aerosol aggregates. *Proc Natl Acad Sci U S A* 98(21):11851–11856
 253. Park K, Kittelson D, McMurry P (2004) Structural properties of diesel exhaust particles measured by transmission electron microscopy (TEM): relationships to particle mass and mobility. *Aerosol Sci Technol* 38(9):881–889
 254. China S, Mazzoleni C, Gorkowski K, Aiken AC, Dubey MK (2013) Morphology and mixing state of individual freshly emitted wildfire carbonaceous particles. *Nat Commun* 4:DOI:10.1038/ncomms3122
 255. Chakrabarty RK, Garro MA, Garro BA, Chancellor S, Moosmüller H, Herald CM (2011) Simulation of aggregates with point-contacting monomers in the cluster-dilute regime. Part 1: determining the most reliable technique for obtaining three-dimensional fractal dimension from two-dimensional images. *Aerosol Sci Technol* 45(1):75–80
 256. Cai J, Lu N, Sorensen CM (1993) Comparison of size and morphology of soot aggregates as determined by light-scattering and electron microscope analysis. *Langmuir* 9(11):2861–2867
 257. Oh C, Sorensen CM (1997) The effect of overlap between monomers on the determination of fractal cluster morphology. *J Colloid Interface Sci* 193(1):17–25
 258. Sorensen CM, Foke GD (1996) The morphology of macroscopic soot. *Aerosol Sci Technol* 25(3):329–337
 259. Samson RJ, Mulholland GW, Gentry JW (1987) Structural analysis of soot agglomerates. *Langmuir* 3(2):272–281
 260. Köylü ÜÖ, Faeth GM, Farias TL, Carvalho MG (1995) Fractal and projected structure properties of soot aggregates. *Combust Flame* 100(4):621–633
 261. Brasil AM, Farias TL, Carvalho MG (1999) A recipe for image characterization of fractal-like aggregates. *J Aerosol Sci* 30(10):1379–1389
 262. Puri R, Richardson TF, Santoro RJ, Dobbins RA (1993) Aerosol dynamic processes of soot aggregates in a laminar ethene diffusion flame. *Combust Flame* 92(3):320–333
 263. Megaridis CM, Dobbins RA (1990) Morphological description of flame-generated materials. *Combust Sci Technol* 71(1/3):95–109
 264. Chakrabarty RK, Garro MA, Garro BA, Chancellor S, Moosmüller H, Herald CM (2011) Simulation of aggregates with point-contacting monomers in the cluster-dilute regime. Part 2: comparison of Two- and three-dimensional structural properties as a function of fractal dimension. *Aerosol Sci Technol* 45(8):903–908
 265. McDonald R, Biswas P (2004) A Methodology to establish the morphology of ambient aerosols. *J Air Waste Manag Assoc* 54(9):1069–1078
 266. Brasil, Farias, Carvalho (2000) Evaluation of the fractal properties of cluster-cluster aggregates. *Aerosol Sci Technol* 33(5):440–454
 267. Janssen NA, Gerlofs-Nijland ME, Lanki T, Salonen RO, Cassee F, Hoek G, Fischer P, Brunekreef B, Krzyzanowski M (2012) Health effects of black carbon. World Health Organization, Copenhagen